



Mallmartturk

Your Trusted Global Partner in Export Solutions

EXPORT PRODUCT CATALOGUE

**PARTITION
SYSTEM**

At Mallmartturk, we specialize in providing high-quality products to international markets. With years of experience in the export industry, we offer reliable, efficient, and competitive solutions tailored to meet the needs of our global clients. Our commitment to excellence ensures that we deliver the finest products, adhere to international standards, and maintain strong relationships with our partners across the world.

Let us help you expand your reach and grow your business globally. Trust MALLMARTTURK for all your export needs!



ABOUT US

About Mallmartturk,

As you all know very well, since our establishment as Mallmartturk, in all our areas of activity, we have always followed a corporate philosophy that drives us to make choices not just between good and bad, but between good and the best.

Our goal has been to add value to our country, to be among the internationally respected companies, and to fly the flag of both our country and our group in every corner of the world. We set our mission in line with this vision and have always moved forward with this goal. Of course, to achieve this, we had to adapt to change and continuously invest.



These investments were directed towards knowledge, innovation, technology, and most importantly, the value we place on people. In short, these were investments in MALLMARTTÜRK's future, which is also our future. Throughout this development process, we were always guided by our leadership principles: "Unity, Passion, Determination, Faith." When these four elements are at the core, the path to leadership becomes swift.

We know that a brand is born, grows, evolves, achieves success, gains trust, is accepted, and becomes lasting for generations through its mission and vision. Today, we take pride in working with the awareness of being a brand that has achieved leadership in every field in which it operates.

Respectfully,





Modüler Bölme Duvar Sistemleri
Modular Partition Systems

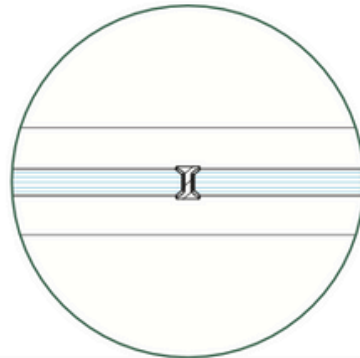
SG-40 / SG-55

CAM CAMA TEK CAMLI SİSTEMLER
SINGLE GLAZED SYSTEMS



MEKANLARINIZI ÖZELLEŞTİRİRKEN; ŞEFFAF, YALIN, MODERN GÖRÜNÜMLÜ VE KUSURSUZ DETAYLARIYLA BEKLENTİLERİNİZİ EN İYİ ŞEKİLDE CEVAPLAMAKTADIR.

WHILE CREATING PRIVATE SPACES, SG-40 / SG-55 PROVIDES THE BEST SOLUTIONS TO CUSTOMERS REQUIREMENTS WITH ITS TRANSPARENCY, SIMPLICITY, MODERN APPEARANCE AND EXCELLENT DETAILS.

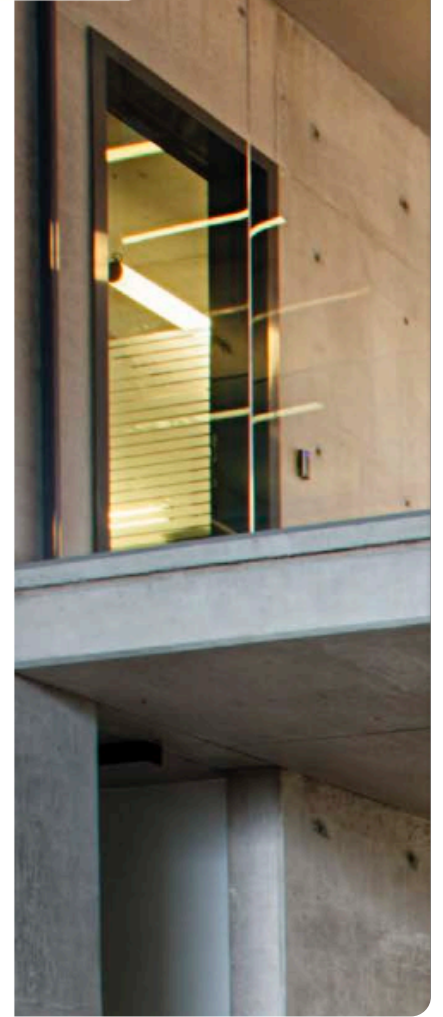
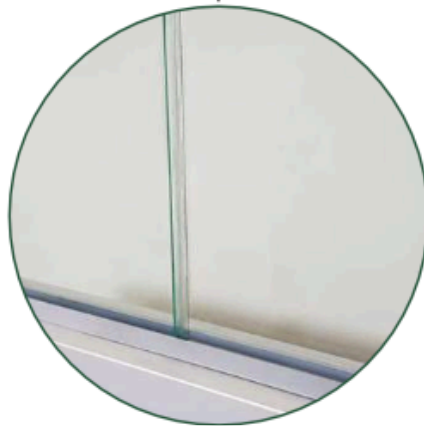


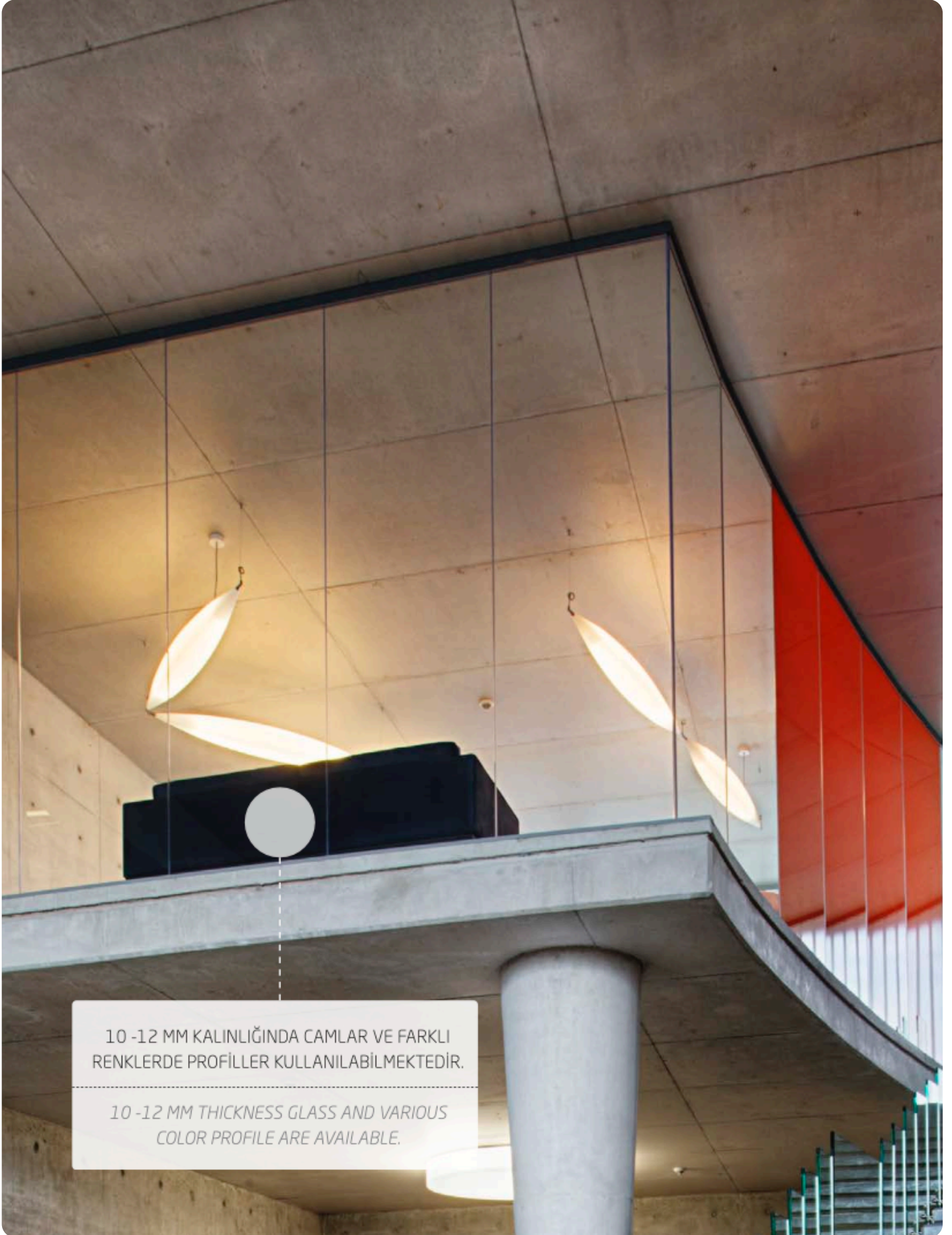
Your Trusted Global Partner in Export Solutions



DÜŞEYDE, İNCE ALÜMİNYUM VEYA PVC
DERZ PROFİLLERİ VEYA ÇİFT TARAFLI
BANT GEÇİŞLERİ UYGULANABİLMEKTEDİR.

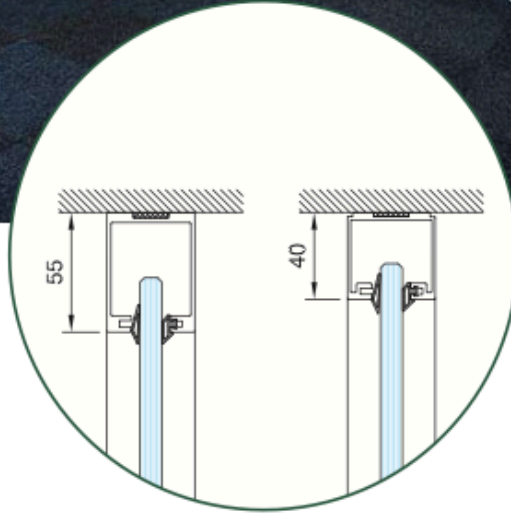
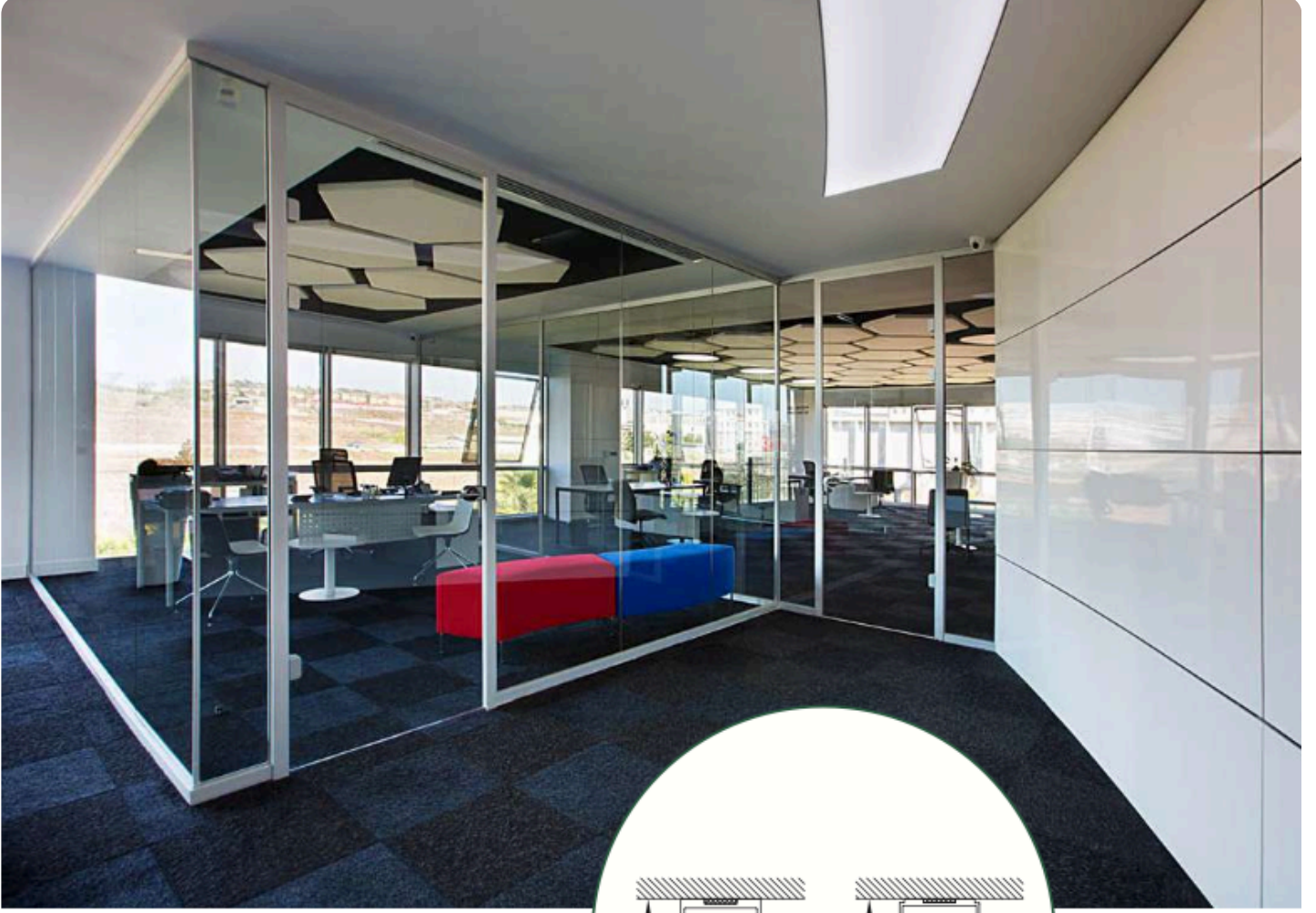
*IN GLASS TO GLASS JOINTS, THIN
ALUMINIUM OR PVC JOINT PROFILES OR
DOUBLE SIDED TAPES CAN BE USED.*





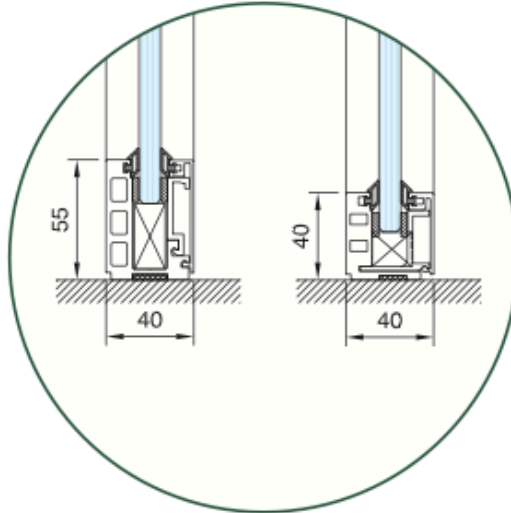
10 -12 MM KALINLIĞINDA CAMLAR VE FARKLI
RENKLERDE PROFİLLER KULLANILABİLMEKTEDİR.

10 -12 MM THICKNESS GLASS AND VARIOUS
COLOR PROFILE ARE AVAILABLE.



ZEMİN VE TAVAN PROFİLLERİ
40 VEYA 55 MM OLARAK UYGULANABİLEN
BU SİSTEMDE, MAKSİMUM SAYDAMLIK
ELDE EDİLMEKTEDİR.

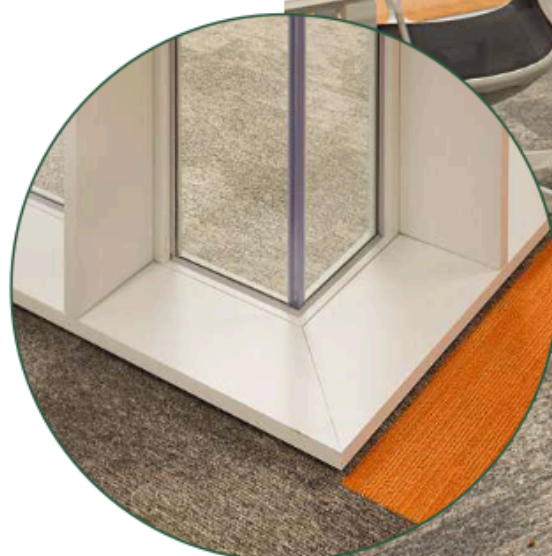
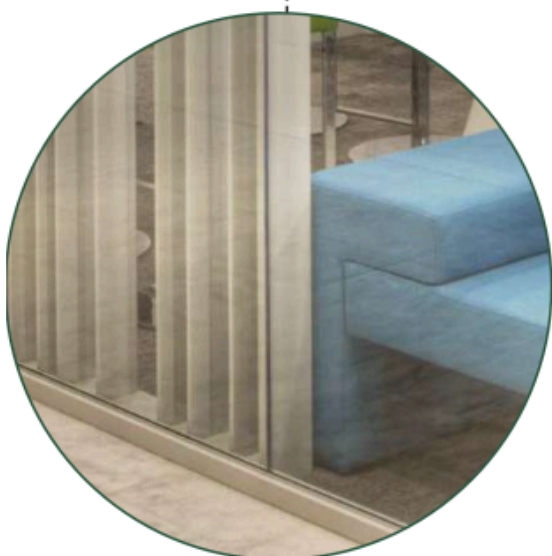
MAXIMUM TRANSPARENCY IS OBTAINED
IN THIS SYSTEM WHERE HEIGHT
GROUND AND CEILING PROFILES CAN BE
APPLIED AS 40 OR 55 MM.



Your Trusted Global Partner in Export Solutions



Your Trusted Global Partner in Export Solutions





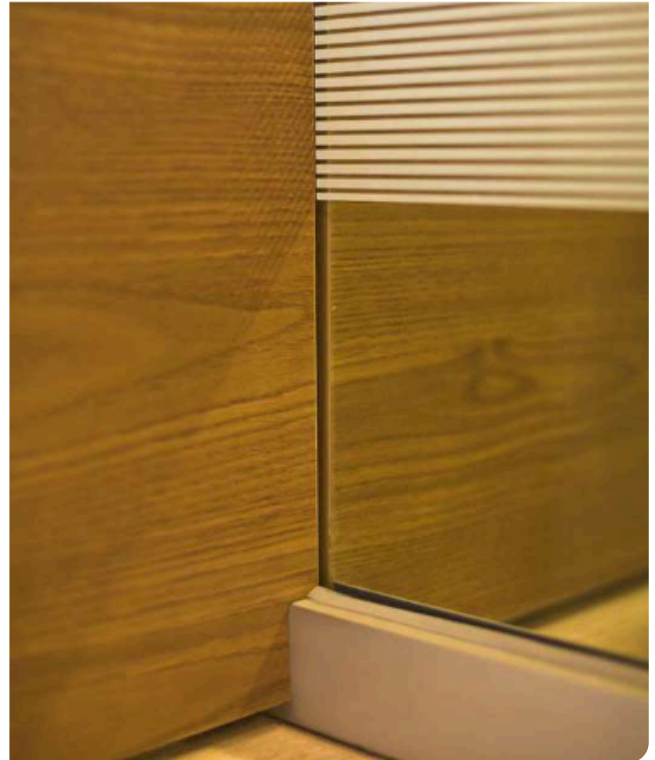


SG-40 / SG-55 SİSTEMLERİN "DM-HIDDEN KASA" İLE BİRLİKTE KULLANIMI

*USE OF SG-40 / SG-55
SYSTEMS WITH
"DM-HIDDEN FRAME"*

SG-40 / SG-55 SİSTEMLERİNDE,
KAPI KASASININ GİZLENİLMESİ İSTENİLEN
DURUMLARDA KULLANILAN ÇÖZÜMDÜR.
KASAYI GİZLEYEN DETAY YALIN BİR
GÖRÜNTÜ OLUŞMASINI SAĞLAR.

*IT IS THE SOLUTION USED IN PROJECTS
WHERE THE DOOR FRAME IS REQUESTED
TO BE CONCEALED IN SG-40 / SG-55 SYSTEMS.
THIS SOLUTION PROVIDES A PLAIN
APPEARANCE.*



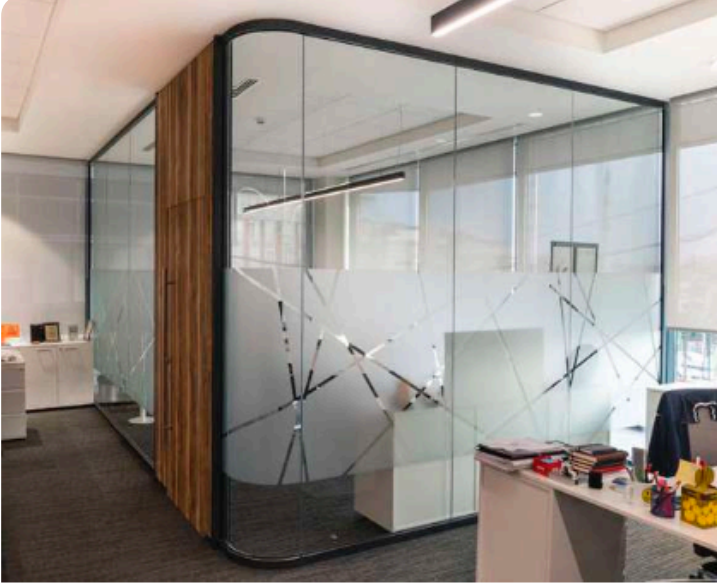


KABLO KANALI

CABLE DUCT

ELEKTRİK KABLOLARININ GEÇİŞİ, SİSTEME ENTEGRE ALÜMİNYUM YA DA DOLU KABLO KANALLARI İLE GİZLENİR. PRİZ, ANAHTAR, BUTON, KARTLI GEÇİŞ GİBİ SİSTEMLERİN MONTAJINA OLANAK TANINIR. STANDARTLARA UYGUN OLARAK, KAPAKLI ALÜMİNYUM VEYA AHŞAP KABLO KANAL SEÇENEKLERİ MEVCUTTUR.

ELECTRICAL CABLES PASS THROUGH THE INTEGRATED CABLE DUCTS. THEY ALLOW THE USE OF PLUGS, BUTTONS OR DOOR LOCK SYSTEMS. CABLE DUCTS CAN BE COVERED WITH ALUMINIUM CAPS OR COVERED IN WOOD FOR APPEARANCE.

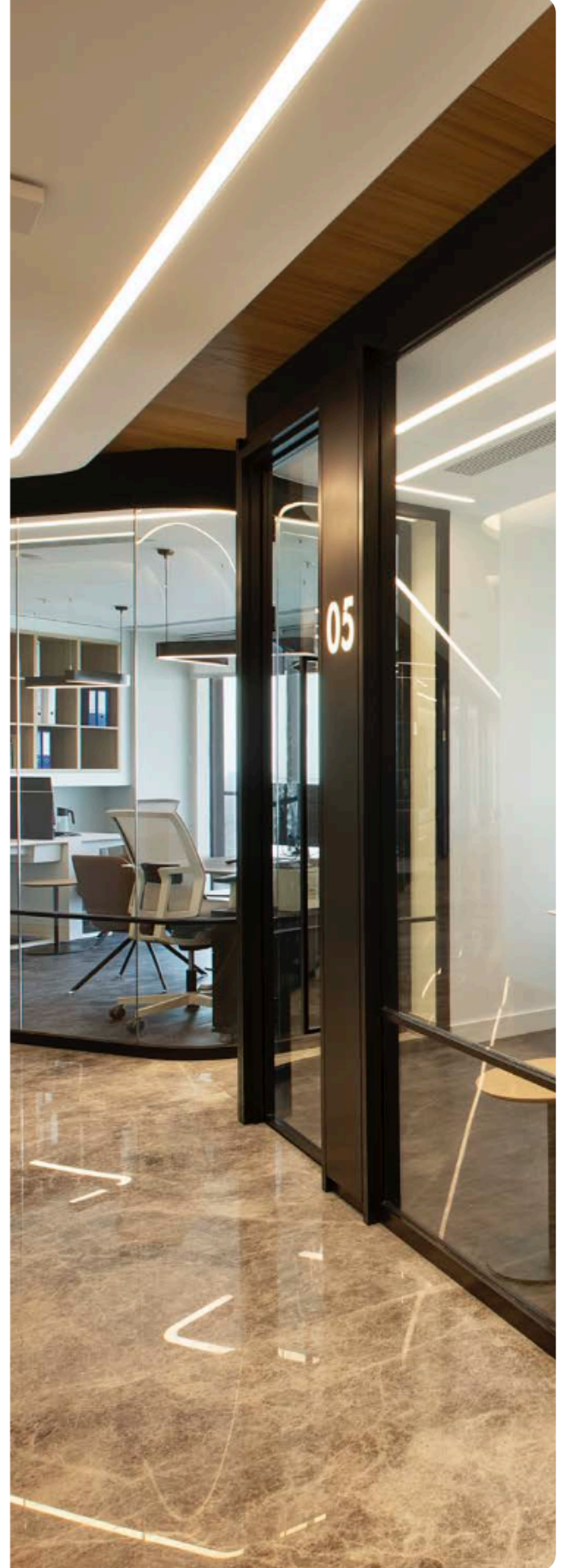
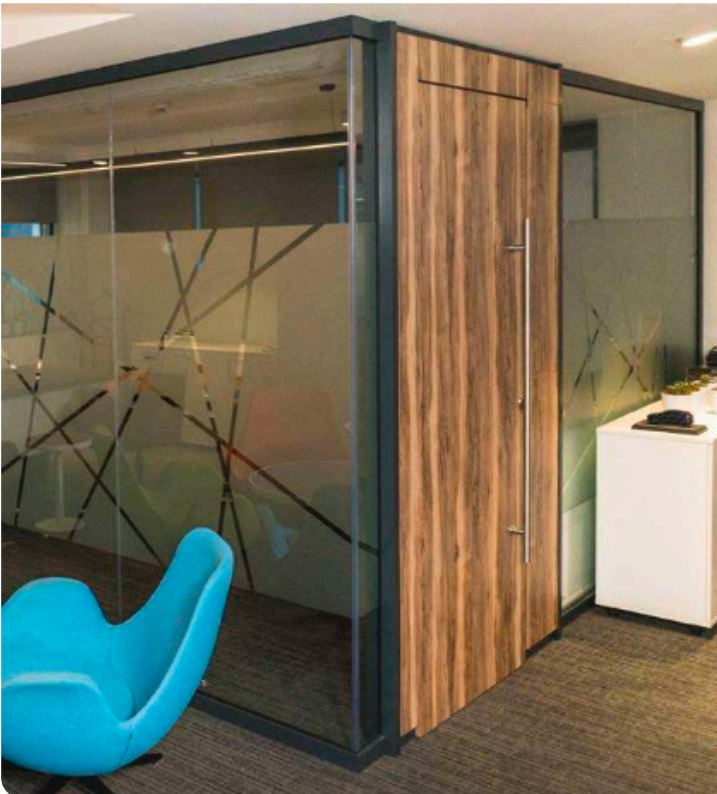


KÖŞE DÖNÜŞLERDE ALTERNATİF ÇÖZÜMLER

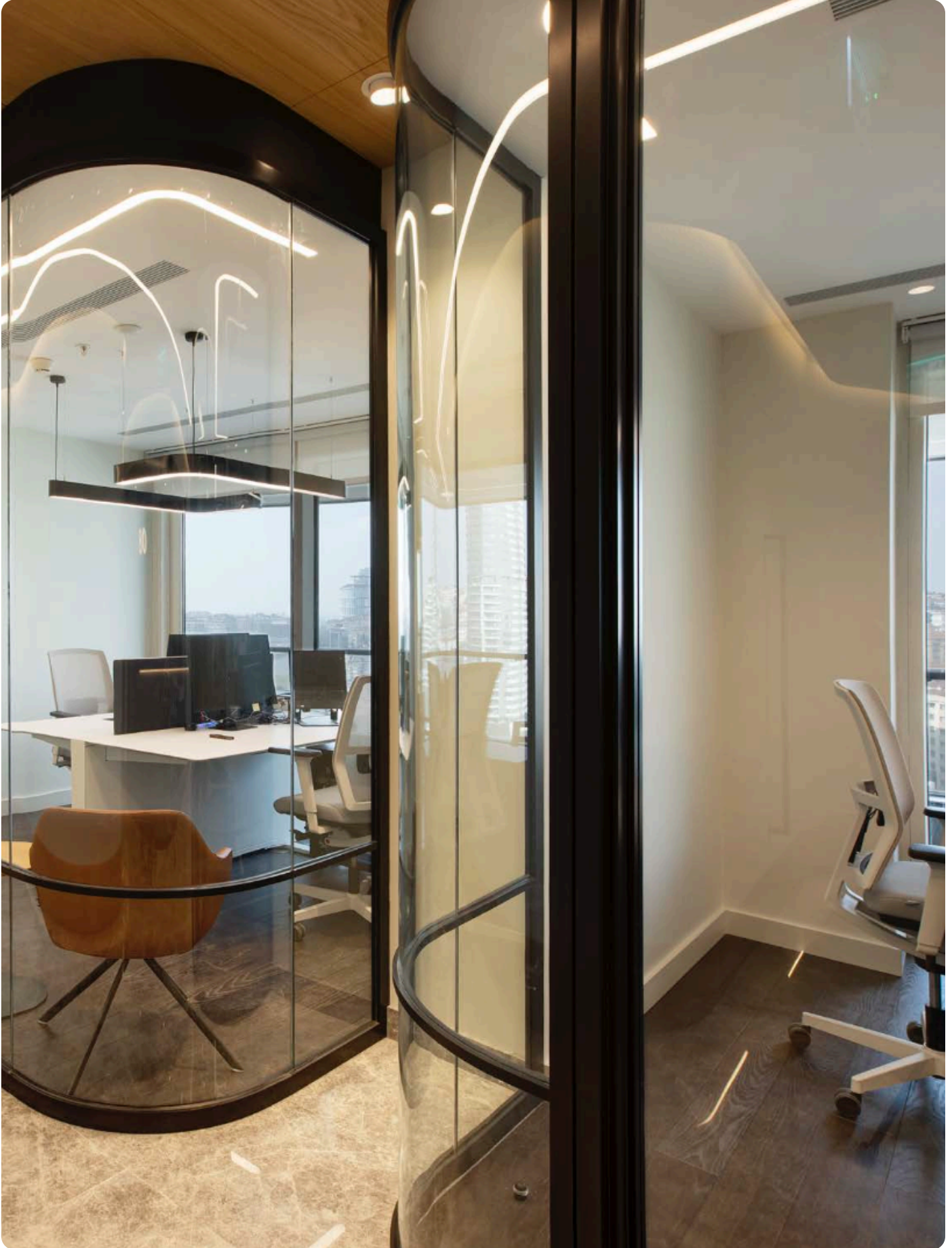
ALTERNATIVE SOLUTIONS FOR CORNER TURNS

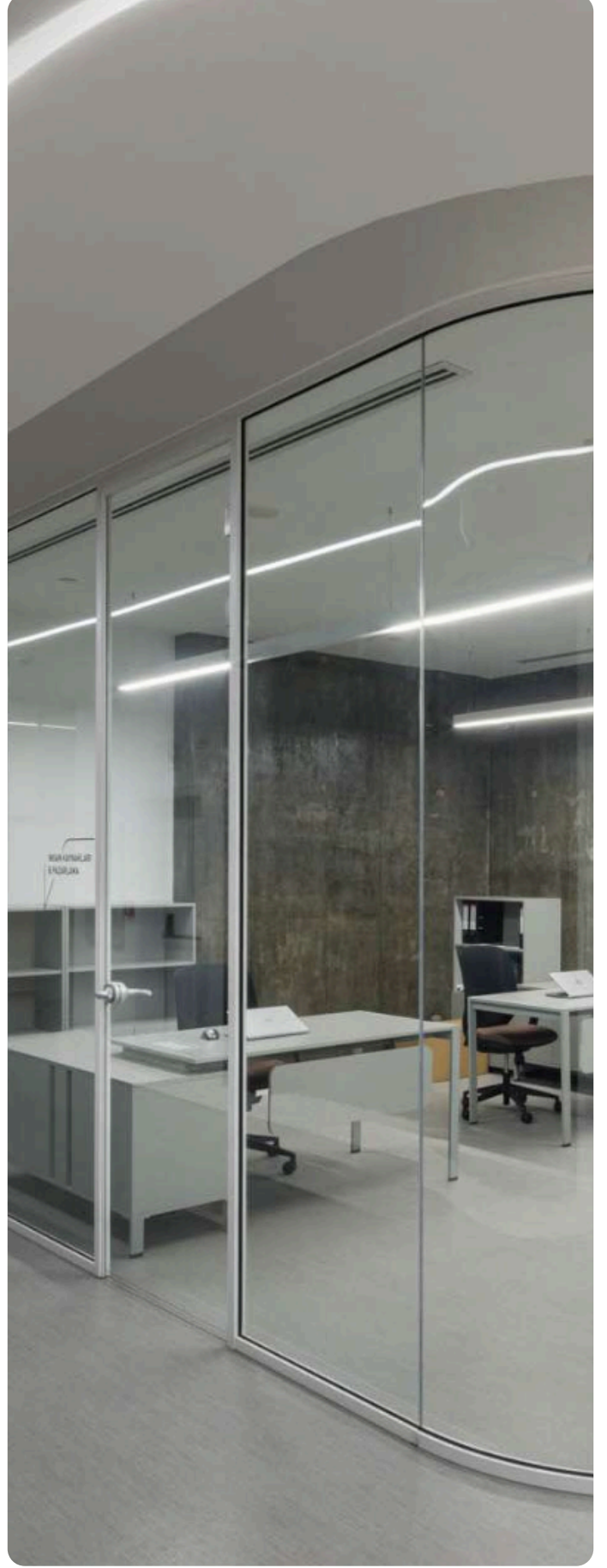
BOMBE CAMLI DÖNÜŞLER; İNCE ALÜMİNYUM VEYA PVC DERZ PROFİLLERİ VEYA ÇİFT TARAFLI BANT İLE UYGULANAN 90 DERECE DÖNÜŞLERE ALTERNATİF OLUŞTURMAKTADIR.

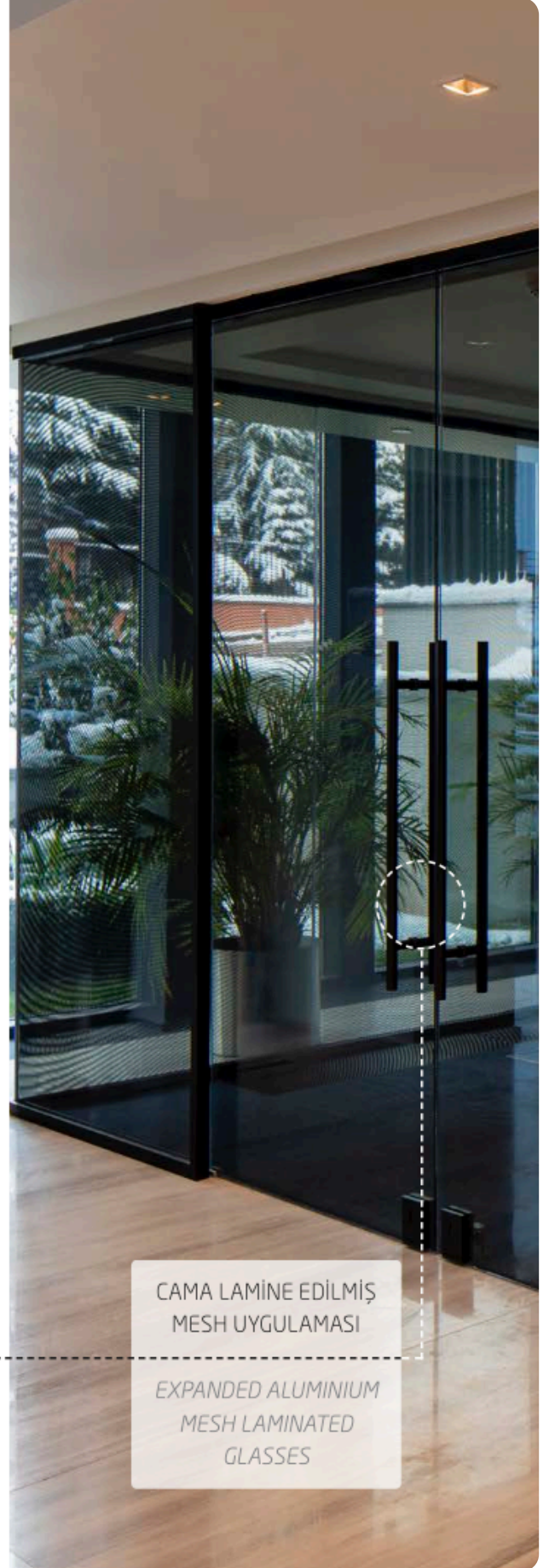
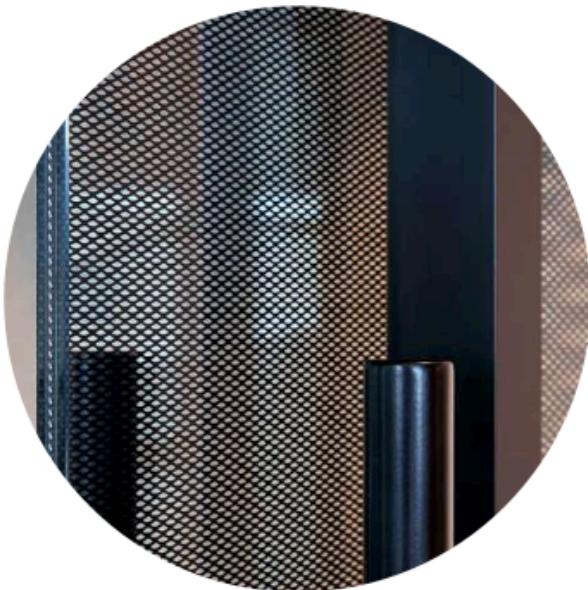
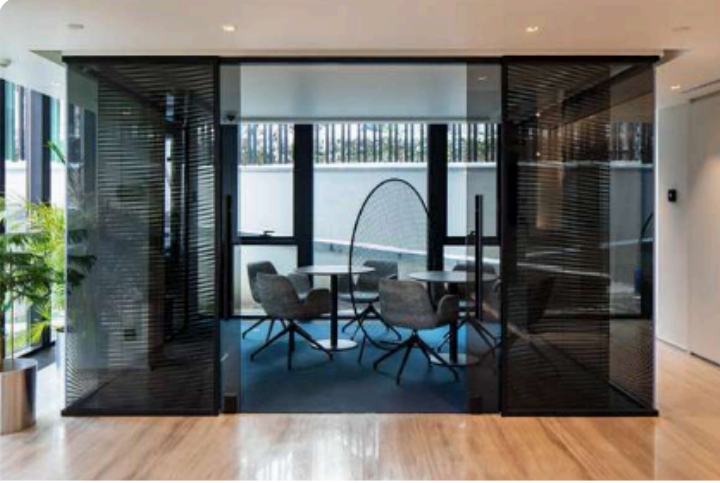
CURVED GLASS TURNS; IT IS AN ALTERNATIVE TO 90 DEGREE TURNS REALIZED WITH THIN ALUMINIUM OR PVC JOINT PROFILES OR DOUBLE-SIDED TAPE.



Your Trusted Global Partner in Export Solutions

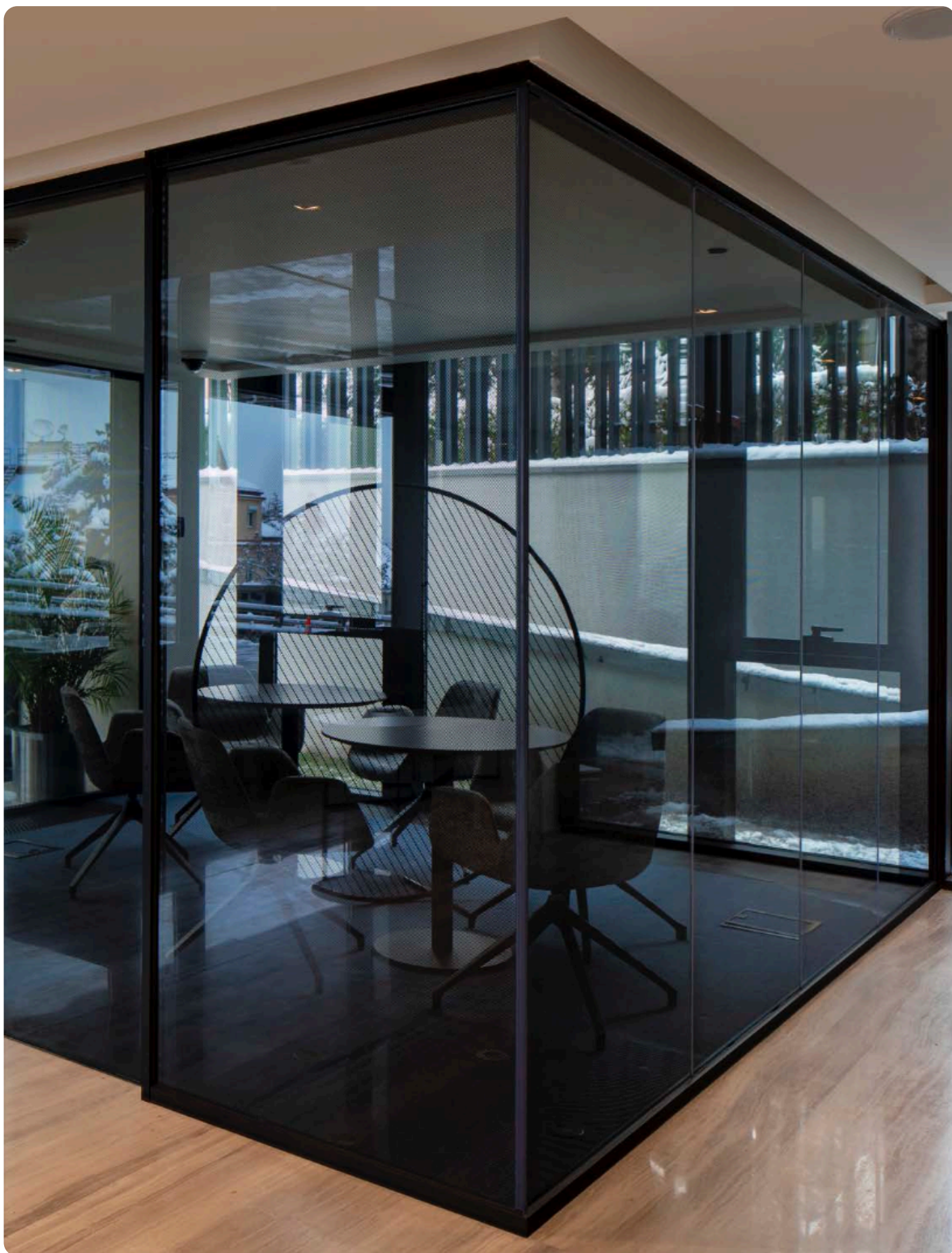






CAMA LAMİNE EDİLMİŞ
MESH UYGULAMASI

EXPANDED ALUMINIUM
MESH LAMINATED
GLASSES





TEK CAMLI SİSTEMDE
37dB'E KADAR
SES YALITIMI SAĞLANIR.

SOUND INSULATION IS PROVIDED
UNTIL **37dB**
WITH SINGLE GLAZED SYSTEM.

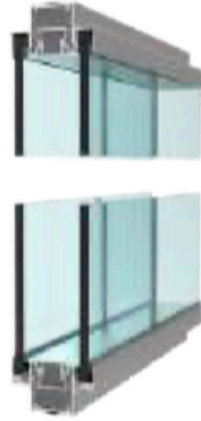




* Akredite kurum tarafından, TS EN ISO 10140-2'ye göre laboratuvar ortamında yapılan ses yalıtım testinin, TS EN 717-1'e göre değerlendirilmiş sonucudur.
Value measured at laboratory environments complies with TS EN 10140-2 by accredited institution and measured values are defined in TS EN ISO 717-1.

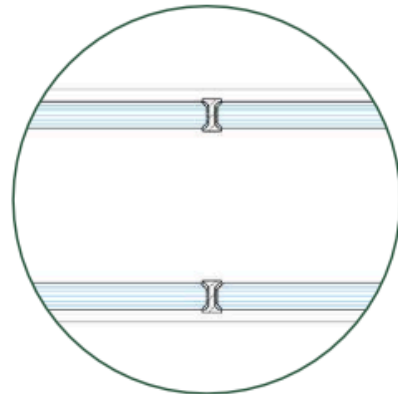
DG-87

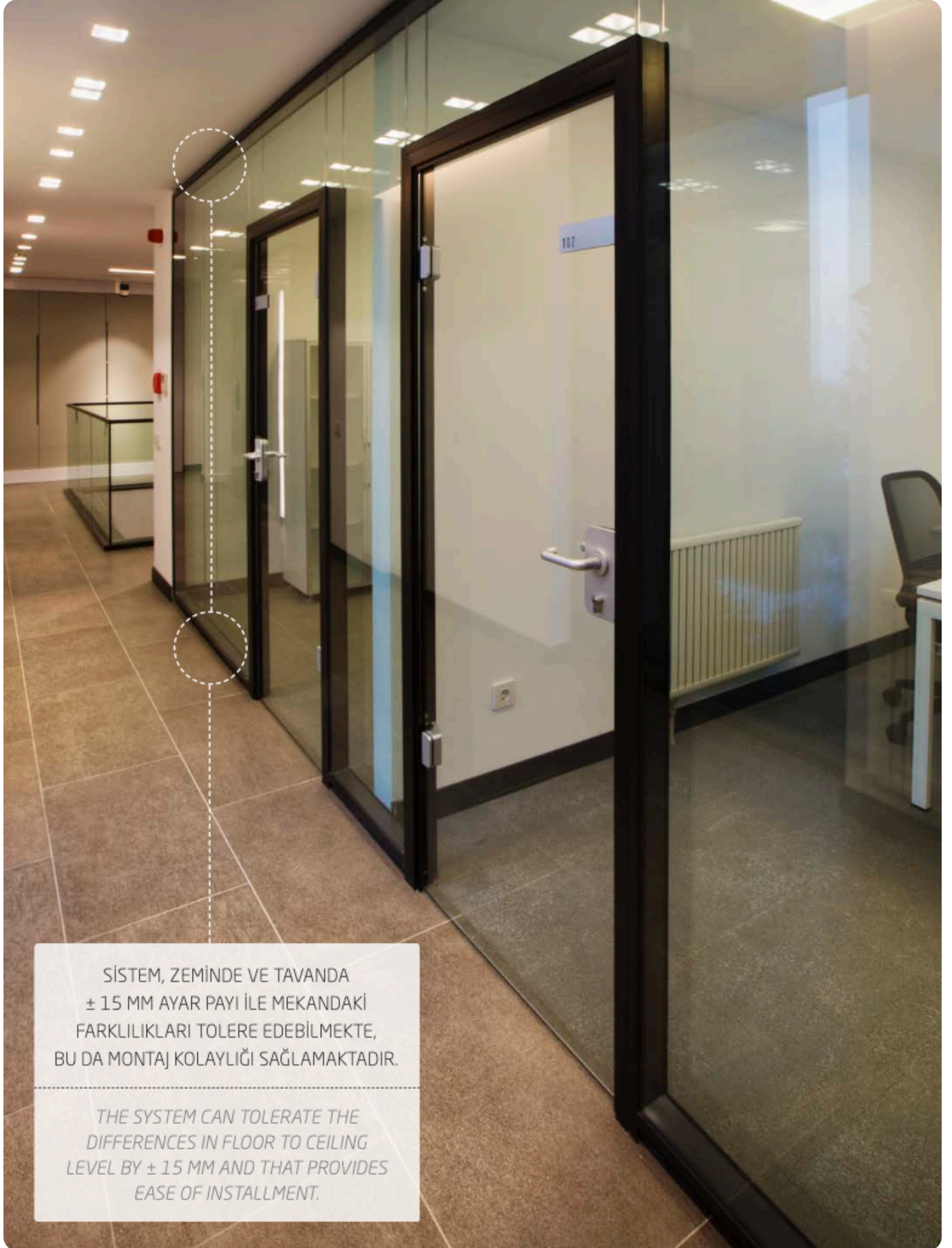
CAM CAMA ÇİFT CAMLI SİSTEM DOUBLE GLAZED SYSTEM



MAKSİMUM ŞEFFAFLIK İÇİN DÜŞEY PROFİLSİZ OLARAK TASARLANAN DG-87, AYNI ZAMANDA YÜKSEK AKUSTİK İZOLASYONA SAHİP OLMASIYLA ÖNE ÇIKIYOR. CAM CAMA GEÇİŞLERDE SUNDUĞU FARKLI ALTERNATİFLERLE İSTENİLEN TASARIMIN YAPILMASINA İMKAN VEREN SİSTEM, DOLU MODÜL ENTEGRASYONU İLE DE ESTETİK BÖLME DUVAR TASARIMI İMKANI SUNUYOR.

DESIGNED WITHOUT VERTICAL PROFILES FOR MAXIMUM TRANSPARENCY, THE DG-87 STANDS OUT WITH ITS HIGH ACOUSTIC INSULATION. THE SYSTEM OFFERS AESTHETIC PARTITION WALL DESIGN OPPORTUNITY WITH SOLID MODULE INTEGRATION.





SİSTEM, ZEMİNDE VE TAVANDA
± 15 MM AYAR PAYI İLE MEKANDAKİ
FARKLILIKLARI TOLERE EDEBİLMEKTE,
BU DA MONTAJ KOLAYLIĞI SAĞLAMAKTADIR.

THE SYSTEM CAN TOLERATE THE
DIFFERENCES IN FLOOR TO CEILING
LEVEL BY ± 15 MM AND THAT PROVIDES
EASE OF INSTALLMENT.

46dB*

ÇİFT CAMLI SİSTEM SAYESİNDE
46dB'E KADAR
ÜSTÜN AKUSTİK KONFOR
ELDE EDİLİR.

WITH DOUBLE GLAZED SYSTEM,
SUPERIOR ACOUSTIC COMFORT
ARE ACHIEVED UP TO **46dB**.

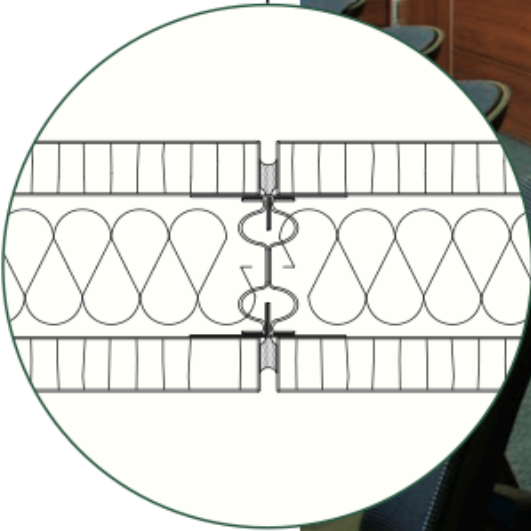
* Akredite kurum tarafından, TS EN ISO 10140-2'ye göre laboratuvar ortamında yapılan ses yalıtım testinin, TS EN 717-1'e göre değerlendirilmiş sonucudur.
Value measured at laboratory environments complies with TS EN 10140-2 by accredited institution and measured values are defined in TS EN ISO 717-1.



DOLU MODÜL SOLID MODULE

CAM CAMA YAPISINA EK OLARAK, ÇELİK PROFİL VE RAYLI KLİPS BİRLEŞİMİ İLE PROJENİZE UYGUN DOLU MODÜL ENTEGRASYONUNA DA OLANAK TANIMAKTADIR.

IN ADDITION TO GLASS TO GLASS STRUCTURE, IT OFFERS THE OPPORTUNITY FOR SOLID MODULE INTEGRATION CUSTOMIZED FOR PROJECTS WITH THE USE OF STEEL UPRIGHTS AND CLIP-IN RAILS.



44dB*

DOLU MODÜLLERDE 44dB SES YALITIMI

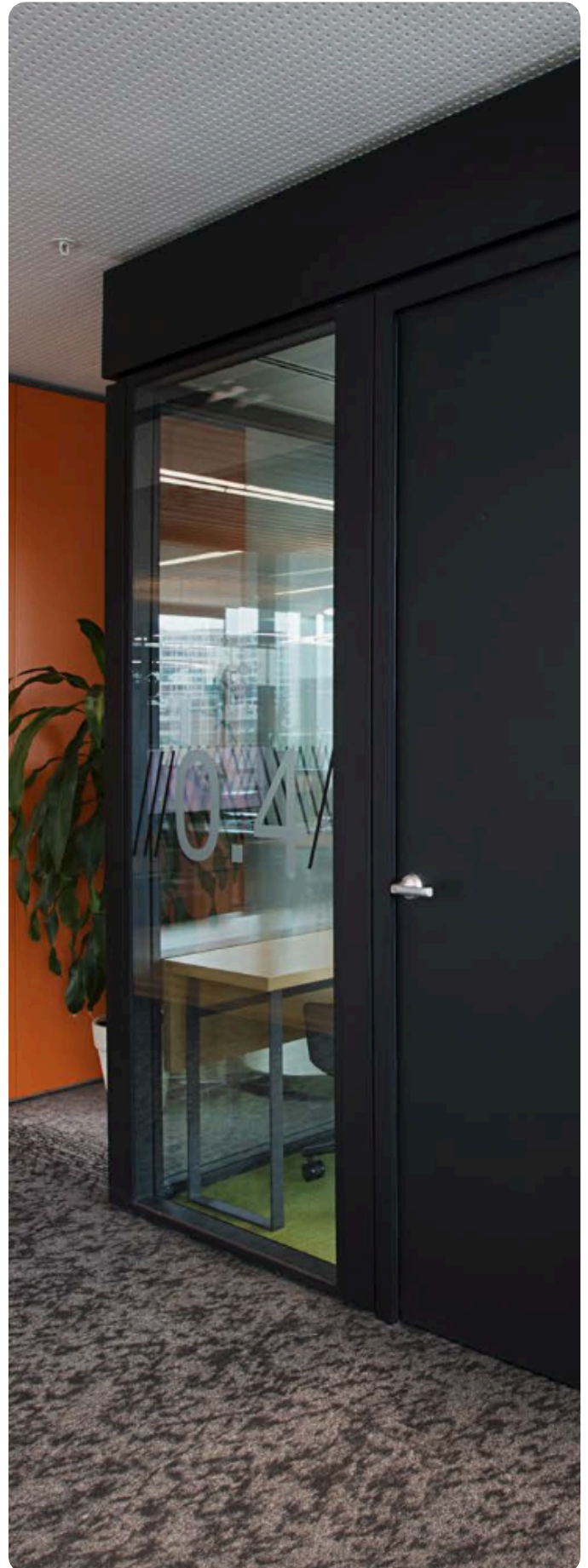
44dB SOUND INSULATION IN SOLID MODULES

DOLU MODÜLLERİN KUSURSUZ BİRLEŞİMİ
SAYESİNDE **"YÜKSEK AKUSTİK İZOLASYON"**
ELDE EDİLİR.

PERFECT JOINTS GIVE **"EXCELLENT ACOUSTIC
INSULATION."**

* Akredite kurum tarafından, TS EN ISO 10140-2'ye göre laboratuvar ortamında yapılan ses yalıtım testinin, TS EN 717-1'e göre değerlendirilmiş sonucudur.
Value measured at laboratory environments complies with TS EN 10140-2 by accredited institution and measured values are defined in TS EN ISO 717-1.

Your Trusted Global Partner in Export Solutions







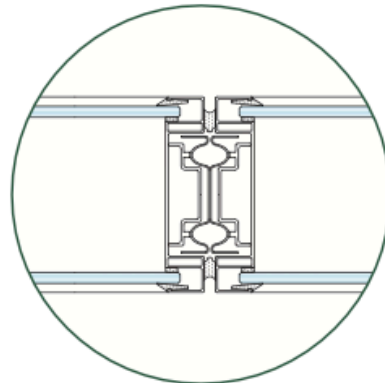
DM-106

DERZLİ SİSTEM SYSTEM WITH JOINTS



OFİS KONFORUNDA EN İYİYİ YARATMAK İÇİN TASARLANAN BU SİSTEM, YÜKSEK STABİLİTE, ÜST DÜZEY SES YALITIMI VE YANGIN DAYANIMI, TESİSATLARA ERİŞİM OLANAĞI, HIZLI MONTAJ VE DEMONTAJ ÖZELLİKLERİ İLE ÖN PLANA ÇIKMAKTADIR.

DESIGNED TO CREATE THE BEST IN OFFICE COMFORT, DM-106 STANDS OUT WITH HIGH STABILITY, HIGH SOUND INSULATION FIRE CONTROL AND FAST INSTALLATIONS FEATURES.





FİLM UYGULAMASI İLE
ESTETİK VE FONKSİYONEL
MEKANLAR YARATMA İMKANI

*OPPORTUNITY TO CREATE
AESTHETIC AND FUNCTIONAL
SPACES WITH FILM APPLICATION*

MANUEL VE OTOMATİK JALUZİ UYGULAMASI

MANUAL & AUTOMATIC VENETIAN BLIND APPLICATION

CAM MONOBLOKLAR İÇERİSİNE JALUZİ MONTAJI, ÜRETİM AŞAMASINDA GERÇEKLEŞTİRİLMEKTEDİR; BÖYLECE ŞANTIYE ORTAMINDAKİ MONTAJ SÜRESİ KISALMAKTA VE TOZLU ORTAMLARIN OLUMSUZ KOŞULLARINDAN ETKİLENİLMEKTEDİR.

INSTALLATION OF VENETIAN BLINDS IN GLASS MONOBLOCKS IS PERFORMED AT THE PRODUCTION STAGE AND THUS THE INSTALLATION TIME ON SITE DECREASES. MOREOVER, IT IS NOT AFFECTED FROM THE NEGATIVE CONDITIONS OF DUSTY ENVIRONMENTS ON SITE.



CAM KALINLIĞI
6 MM, 5 MM VEYA İHTİYACA GÖRE
4 MM OLARAK UYGULANABİLİR.

GLASS THICKNESS CAN BE APPLIED
AS 6 MM, 5 MM OR 4 MM
ACCORDING TO THE NEED.





YÜKSEK STABİLİTE

GÜÇLÜ VE DARBELERE DAYANIKLI SİSTEM, SAĞLAM VE YÜKSEK UYGULAMALARA OLANAK SAĞLAR.

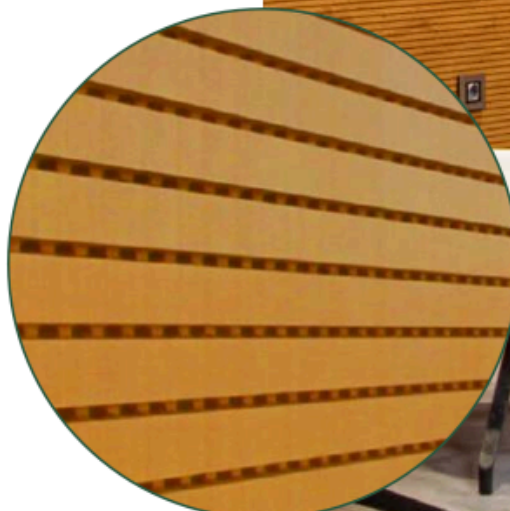
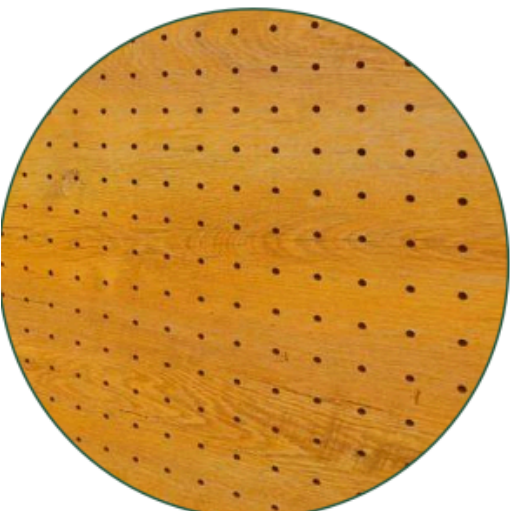
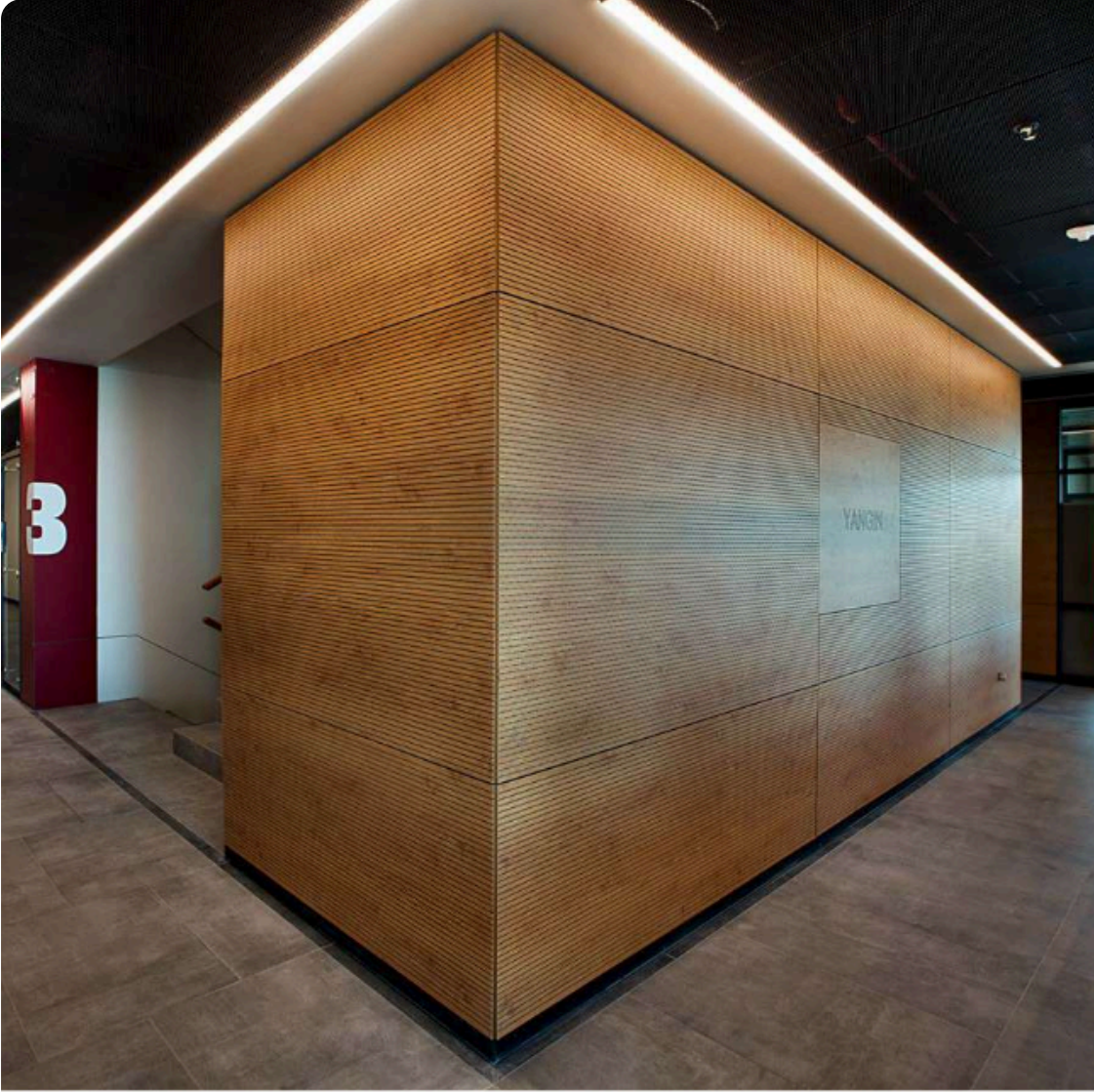
HIGH STABILITY

DUE TO ITS NATURE, DM-106 IS STRONG AND IMPACT RESISTANT, ALLOWING FOR USE OF AREAS WHERE FLOOR TO CEILING HEIGHT NEEDS TO BE HIGH.

MONOBLOK
MONOBLOCK

UYGULAMA YERİNDE DEĞİL, MİLİMETRİK OLARAK FABRİKA ORTAMINDA ÜRETİLİP HAZIRLANAN **"MONOBLOK"** CAM ÜNİTELERİ, MONTAJ SIRASINDA ALÜMİNYUM VE CAM KESME, TEMİZLEME GİBİ İŞLEMLERE GEREK BIRAKMAZ.

"MONOBLOCK" GLASS UNITS, WHICH ARE PRODUCED IN THE FACTORY, NOT ON SITE, DO NOT REQUIRE ANY OPERATIONS DURING ASSEMBLY, SUCH AS GLASS AND ALUMINIUM CUTTING NOR CLEANING.



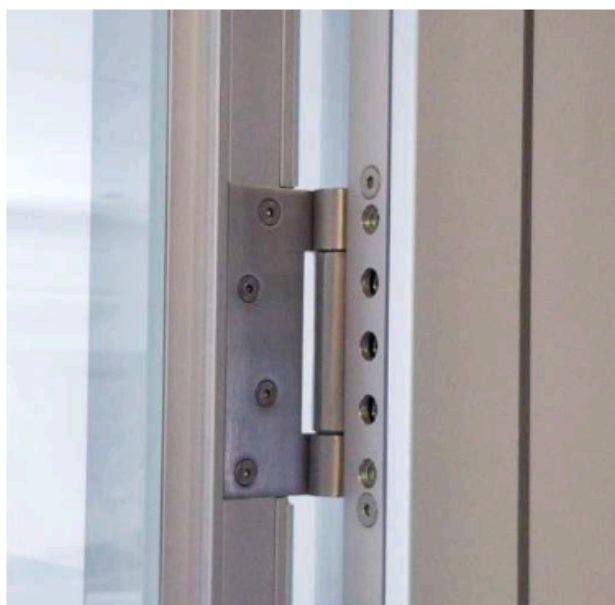
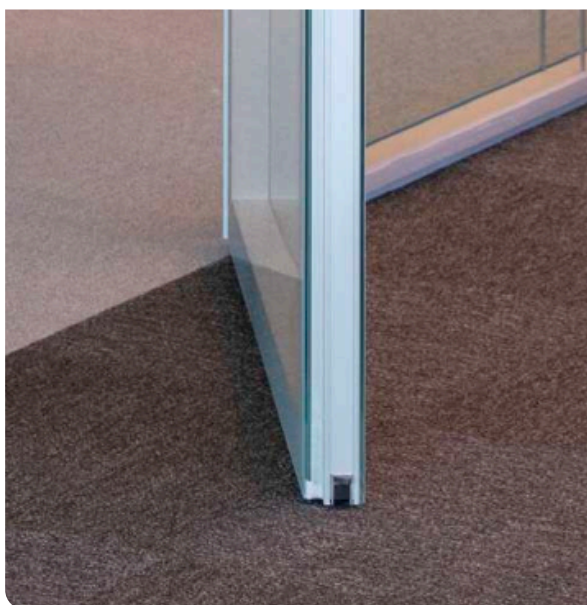
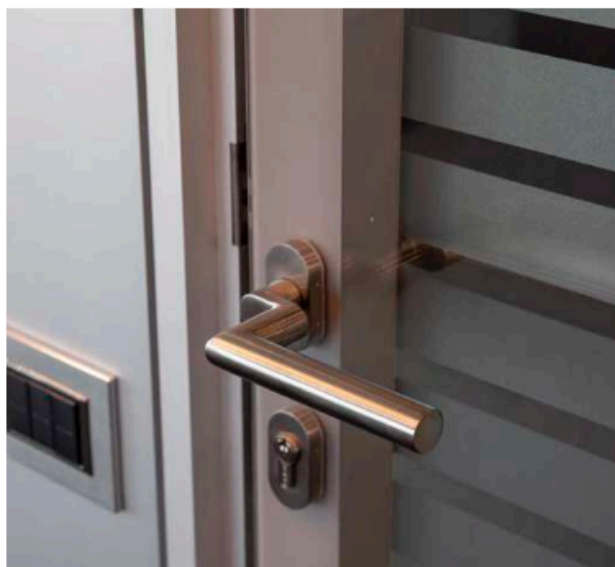
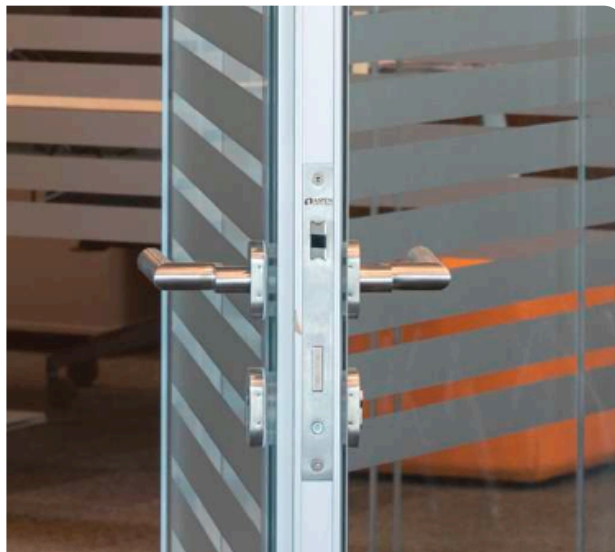
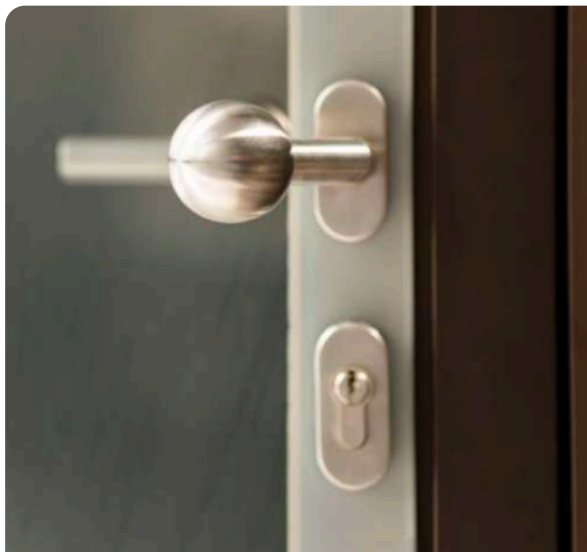
Your Trusted Global Partner in Export Solutions

PERFORASYONLU MODÜLLER
ORTAMDAKİ SESİ ABSORBE EDEREK
AKUSTİK KONFORA KATKI SAĞLAR.

*PERFORATED MODULES ABSORB
THE SOUND AND CONTRIBUTES
TO ACOUSTIC COMFORT.*



Your Trusted Global Partner in Export Solutions





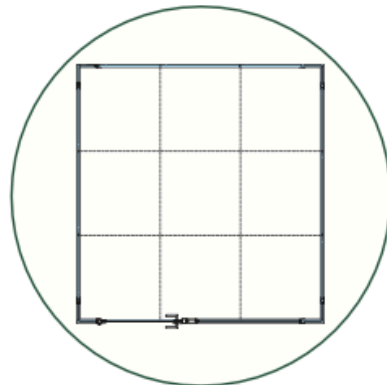
SEPERA RUBİKS

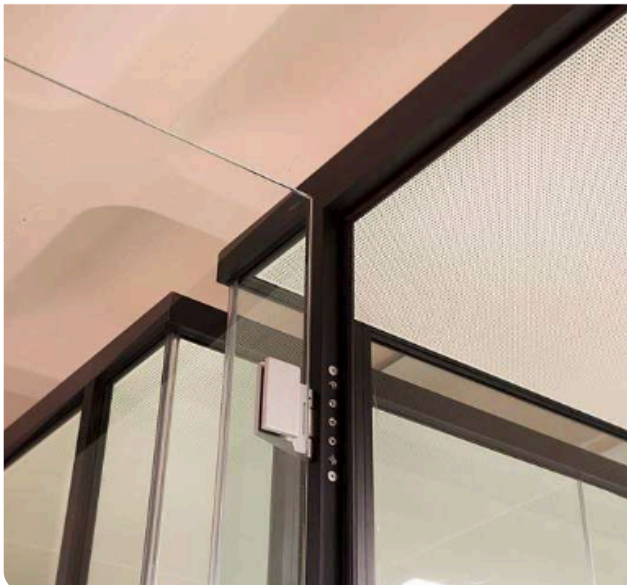
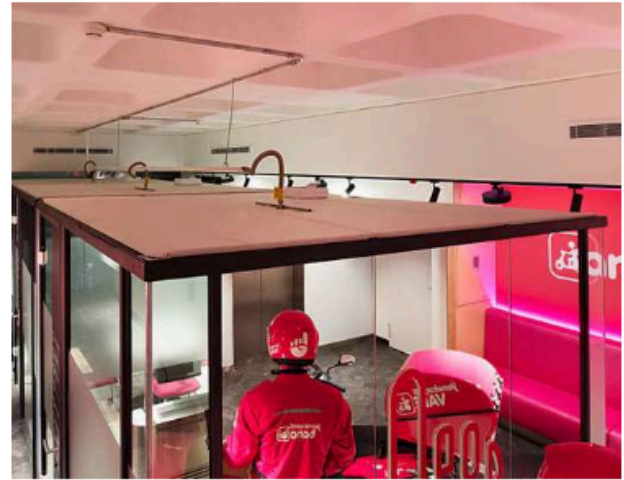
MODÜLER KÜP SİSTEMLERİ MODULAR CUBE SYSTEMS



SEPERA RUBİKS SERİSİ, DUVAR, TAVAN VE AYDINLATMA ÜRÜNLERİ İLE TAMAMEN BİR ASPEN YAPISI OLUP, YÜKSEK TAVANLI ORTAMLARDA KENDİ BAŞINA AYAKTA DURARAK TOPLANTI, ÇALIŞMA VE GÖRÜŞME ODASI GİBİ İŞLEVLERE MEKAN OLUŞTURMAKTADIR.

SEPERA RUBİKS SERIES BEING A COMPLETE ASPEN STRUCTURE WITH ITS PARTITIONS, ITS CEILING AND ITS ILLUMINATION CAN BE USED AS MEETING, WORKING OR VISITING ROOM IN THE HIGH CEILING CONSTRUCTIONS.





• SEPERA SG-55 BÖLME DUVAR SİSTEMİ

CAM CAMA TEK CAMLI SİSTEM

• INTEGRA METAL ASMA TAVAN

PERFORELİ, AKUSTİK CLIP-IN METAL ASMA TAVAN

• LUMUNER LED AYDINLATMA

İSTENİLEN LÜMEN DEĞERLERİNDE TAVAN PANELLERİNE ENTEGRE, TAMAMEN ŞEFFAF VEYA DOLU MODÜLLÜ DUVARLAR, TAVANDA VE CAMDA BİRBİRİNİ TAKIP EDEN DERZLER, KENDİNDEN HAVALANDIRMALI, KENDİ BAŞINA AYAKTA DURAN BİR YAPI

• SEPERA SG-55 PARTITION SYSTEM

SINGLE GLAZED SYSTEM

• INTEGRA METAL CEILING

PERFORATED, ACOUSTIC, CLIP-IN METAL CEILING

• LUMUNER LED LIGHTING

INTEGRATED TO METAL CEILING PANELS WITH REQUESTED LUMEN VALUE, COMPLETELY TRANSPARENT OR WITH SOLID MODULES PARTITIONS, JOINT FOLLOWING EACHOTHER AT THE GLASSES AND CEILINGS, SELF VENTILATION WITH FAN, SELF-STANDING STRUCTURE.

**Cam Kanat** Glass Door Leaf

- 10mm veya 5+5 lamine cam
- Kasa içi başlıklı kullanım
- Çift kanat kullanım imkanı
- Giyotin, kapı kapatıcı kullanımı
- Boyalı cam, film, frit vb. uygulamaları
- 10mm or 5+5 laminated glass
- Door leaf with top panel
- Double leaf use opportunity
- Drop down seal, door closer usage
- Coated glass, film, fritted and so on applications

* SG-40 sistemindeki fotoğraftır.
* The photo represents SG-40 system.

Kullanıldığı Sistemler:
Used in Systems Below:

SG-40
SG-55
DG-87
DM-106
DM-Flush
DM-106 Lite
DM-70 / OM-100
Sepere Rubiks
Sepere Door

**Ahşap Kanat** Wooden Door Leaf

- 40mm, 62mm ve 70mm kalınlığında dolu kapı kanadı
- Kasa içi başlıklı kullanım
- Çift kanat kullanım imkanı
- Giyotin, kapı kapatıcı kullanımı
- Boyalı cam, film, frit vb. uygulamaları
- 40mm, 62mm and 70mm wooden door leaf
- Door leaf with top panel
- Double leaf use opportunity
- Drop down seal, door closer usage
- Coated glass, film, fritted and so on applications

* SG-55 sistemindeki fotoğraftır.
* The photo represents SG-55 system.

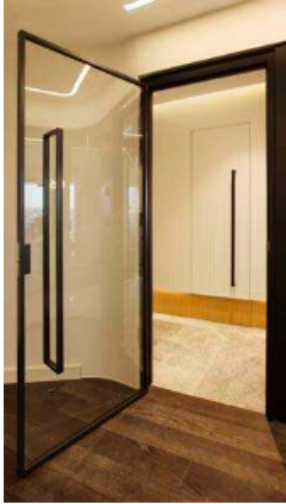
Yüzey Malzemeleri Surface Materials

- MDFlam MDFlam
- Laminat Laminated
- Lake Lake
- Doğal Kaplama Natural Coating
- Boyalı Cam Painted Glass

Kullanıldığı Sistemler:
Used in Systems Below:

| 40mm Kanat Door Leaf: | 62mm Kanat Door Leaf: | 70mm Kanat Door Leaf: |
|-----------------------|-----------------------|-----------------------|
| SG-40* | DG-87 | SG-40 |
| SG-55 | DM-106 | SG-55 |
| DG-87 | DM-Flush | DM-106 |
| DM-106 | Sepere Door | DM-Flush |
| DM-Flush | | |
| DM-106 Lite | | |
| OM-70 / OM-100 | | |
| Sepere Rubiks | | |
| Sepere Door | | |

*(SG-55 kasa ile | With SG-55 door frame)

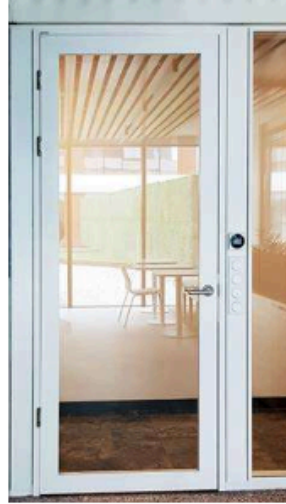
**Alüminyum Çerçevesi Cam Kanat**
Aluminium Framed Glass Door Leaf

- 8mm temp. cam veya 4+4 lamine temp. cam
- Çift kanat kullanım imkanı
- Giyotin, kapı kapatıcı kullanımı
- Boyalı cam, film, frit vb. uygulamaları
- 8mm temp. glass or 4+4 laminated temp. glass
- Double leaf use opportunity
- Drop down seal, door closer usage
- Coated glass, film, fritted and so on applications

* DM-106 sistemindeki fotoğraftır.
* The photo represents DM-106 system.

Kullanıldığı Sistemler:
Used in Systems Below:

SG-40 (SG-55 kasa ile | With SG-55 door frame)
SG-55
DG-87
DM-106
DM-Flush
DM-106 Lite
OM-70 / OM-100
Sepere Rubiks
Sepere Door

**Alüminyum Çerçevesi Cam Kanat (Geniş)**
Aluminium Framed Glass Door Leaf (Wide)

- 8mm temp. cam veya 4+4 lamine temp. cam
- Çift kanat kullanım imkanı
- Giyotin, gizli kapı kapatıcı, panik bar kullanımı
- Boyalı cam, film, frit vb. uygulamaları
- 8mm temp. glass or 4+4 mm laminated temp. glass
- Double leaf use opportunity
- Drop down seal, door closer usage
- Coated glass, film, fritted and so on applications

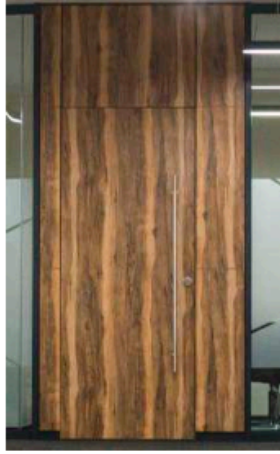
* DM-106 sistemindeki fotoğraftır.
* The photo represents DM-106 system.

Kullanıldığı Sistemler:
Used in Systems Below:

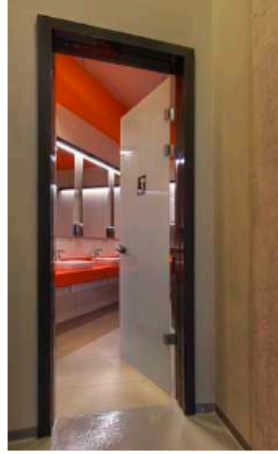
SG-40 (SG-55 kasa ile | With SG-55 door frame)
SG-55
DG-87
DM-106
DM-Flush
DM-106 Lite
OM-70 / OM-100
Sepere Rubiks
Sepere Door



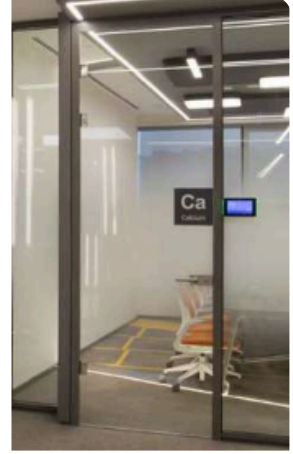
Ahşap Kanat (40mm) (Başlıklı)
Wooden Door Leaf (40 mm) (With Header)
Sistem : SG-55
System : SG-55



Ahşap Kanat (70mm)
Wooden Door Leaf (70 mm)
Sistem : SG-55 (DM-Hidden Kasa ile)
System : SG-55 (With DM-Hidden frame)



Cam Kanat
Glass Door Leaf
Sistem : Sepera Door
System : Sepera Door



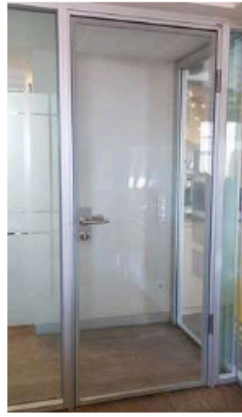
Cam Kanat
Glass Door Leaf
Sistem : DG-87
System : DG-87



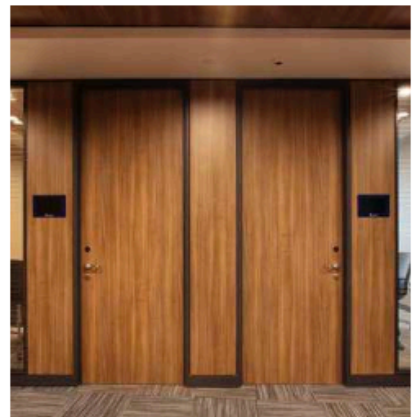
Çift Cam Kanat (62mm)
Double Glass Door Leaf (62mm)
Sistem : DG-87
System : DG-87



Çift Cam Kanat (62mm)
Double Glass Door Leaf (62mm)
Sistem : DM-106
System : DM-106



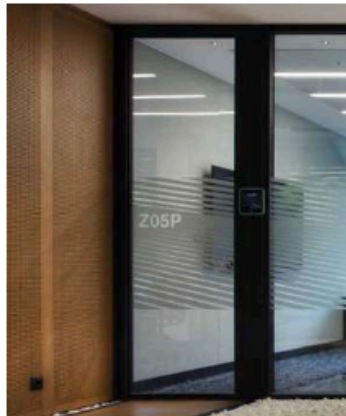
Çift Cam Kanat (40mm)
Double Glass Door Leaf (40mm)
Sistem : DG-87
System : DG-87



Ahşap Kanat (40mm) (Kablo Kanallı)
Wooden Door Leaf (40mm) (With Cable Duct)
Sistem : DM-106
System : DM-106



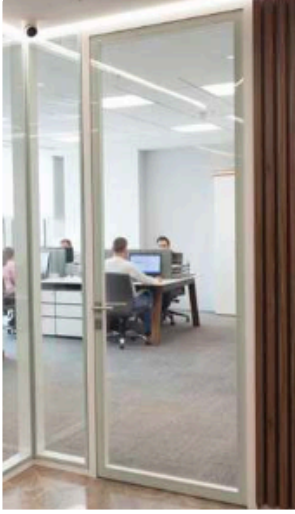
Ahşap Çift Kanat (40mm)
Wooden Door - Double Leaf (40 mm)
Sistem : DM-106
System : DM-106



Alüminyum Çerçevesi Cam Kanat
(Kablo Kanallı ve GİYOTİNE)
Glass Door Leaf With Aluminium Frame
(With Cable Duct & Drop Down Seal)
Sistem : DG-87
System : DG-87



Alüminyum Çerçevesi Cam Çift Kanat (Geniş)
Glass Door Leaf With Aluminium Frame
(Wide) - Double Leaf
Sistem : DM-106
System : DM-106



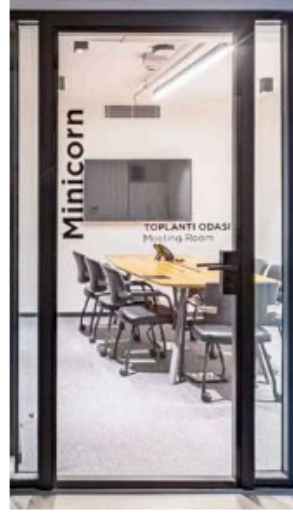
Çift Cam Kanat (62mm) Double Glass Door Leaf (62mm)

- 8mm + 6mm camların çift komponentli silikonla alüminyuma yapışmasıyla üretim
 - Çift kanat kullanım imkanı
 - GİYOTİN, kapı kapatıcı kullanımı
 - Boyalı cam, film, frit vb. uygulamaları
- Production by bonding glass (8mm + 6mm) to bonding aluminum with bi-component silicon
 - Double leaf use opportunity
 - Drop down seal, door closer usage
 - Coated glass, film, fritted and so on applications

* DM-FLUSH sistemindeki fotoğrafıdır.
* The photo represents DM-FLUSH system.

Kullanıldığı Sistemler:
Used in Systems Below:

DG-87
DM-106
DM-Flush
Sepera Door



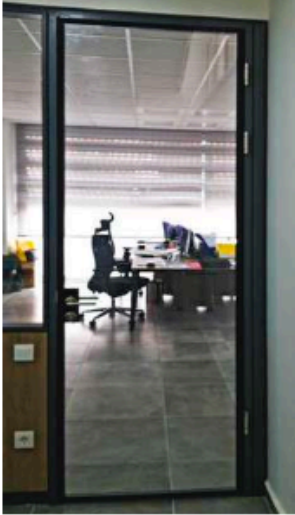
Çift Cam Kanat (62mm) (İNCE) Double Glass Door Leaf (62mm) (SLIM)

- 6mm + 6mm camların çift taraflı bant ile alüminyuma yapışmasıyla üretim
 - Çift kanat kullanım imkanı
 - GİYOTİN, kapı kapatıcı kullanımı
 - Boyalı cam, film, frit vb. uygulamaları
- Production by bonding the 6mm + 6mm glasses to aluminum with double-sided tape
 - Double leaf use opportunity
 - Drop down seal, door closer usage
 - Coated glass, film, fritted and so on applications

* DG-87 sistemindeki fotoğrafıdır.
* This photo represents DG-87 system.

Kullanıldığı Sistemler:
Used in Systems Below:

DG-87
DM-106
DM-Flush
Sepera Door



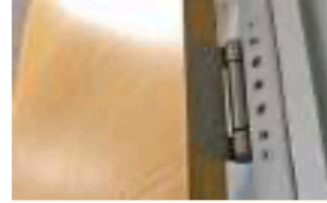
Çift Cam Kanat (40mm) Double Glass Door Leaf (40mm)

- 6mm + 6mm camların çift taraflı bant ile alüminyuma yapışmasıyla üretim
 - Çift kanat kullanım imkanı
 - GİYOTİN, gizli kapı kapatıcı kullanımı
 - Boyalı cam, film, frit vb. uygulamaları
- Production by bonding the 6mm + 6mm glasses to aluminum with double-sided tape.
 - Double leaf use opportunity
 - Drop down seal, door closer usage
 - Coated glass, film, fritted and so on applications

Kullanıldığı Sistemler:
Used in Systems Below:

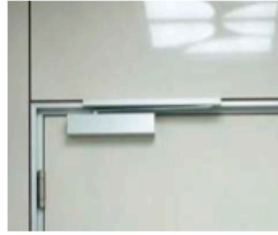
SG-40 (SG-55 kasa ile | With SG-55 door frame)
SG-55
DG-87
DM-106
DM-Flush
DM-106 Lite
Sepera Rubiks
Sepera Door

Your Trusted Global Partner in Export Solutions

Kanat Aksesuarları Door Leaf Accessories**Poket** Hinge Receiver**Menteşeler** Hinges

Bütün sistemlerde standart olarak kullanılır. Menteshelerin 3 eksenli hareketine izin verirken kanatların sarkmasını engeller.

The accessories are used as standard in all systems. They allow the hinges to move in 3 axes and prevent the leaves from sagging.

Kapı Kapatıcı Door Closer

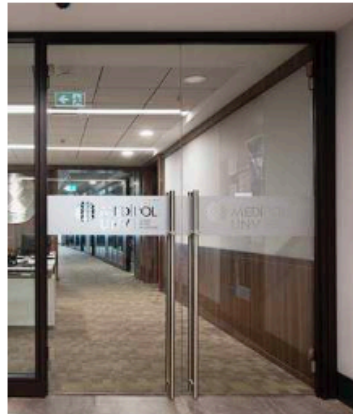
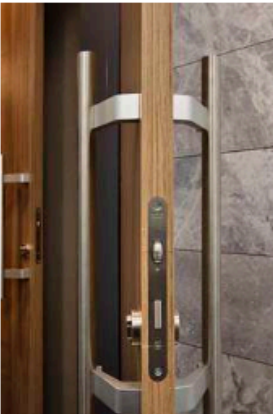
Ahşap ve çift camlı kanatlarda kullanılabilen gizli kapı kapatıcı, estetik bir görünüm sunar.

The concealed door closer, which can be used with wooden and double glass door leaves offers an aesthetic solution.

Kilit Karşılığı Strike Plate

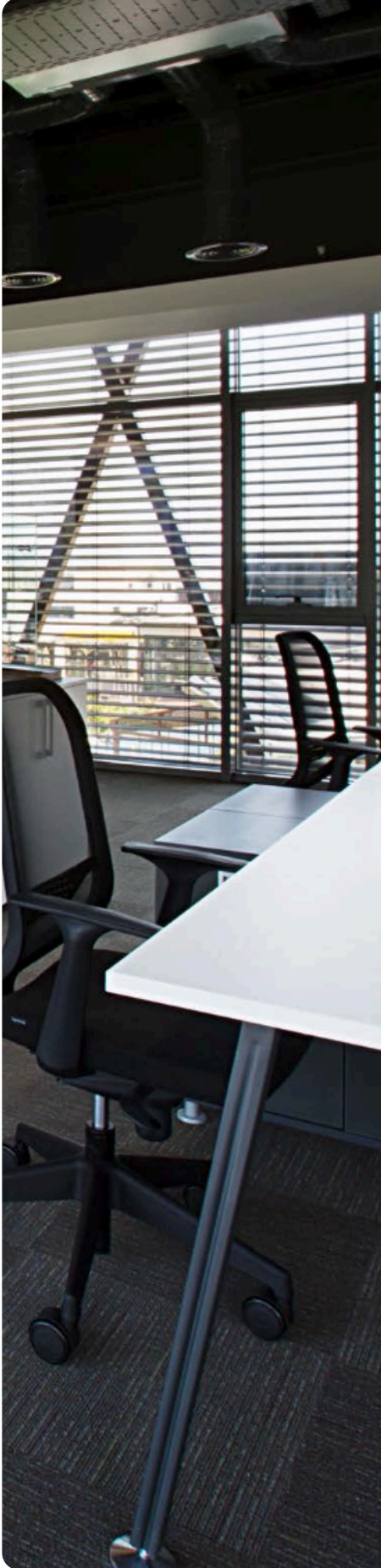
Kasayla hemyüz, fabrika üretimi, çıkıntısı olmayan kilit karşılığı.

Strike plate that is flush with the door frame, factory production and without any jut.

Kapı Kolları Door Handles

Hem ahşap kanatlarda hem cam kanatlarda kullanılabilen çekme kapı kolu farklı tip kilit ve elektrikli kilit karşılıklarıyla birlikte kullanılabilir.

The door handle options, which can be used with both wooden and glass door leaves, are suitable with different types of lock and electric strikes.



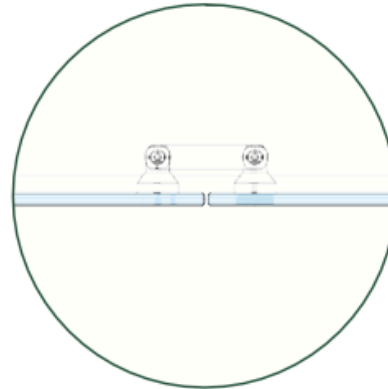
SG-40 LITE SG-55 LITE

CAM TUTUCULU SİSTEMLER *SYSTEMS WITH GLASS FITTINGS*



CAM CAMA BİRLEŞİMLİ DETAYLARI İLE ŞEFFAF VE AYDINLIK MEKAN OLUŞTURMADA EN YALIN ÇÖZÜMÜ SUNMAKTADIR.

WITH ITS GLASS TO GLASS CONNECTION DETAILS, THIS SYSTEMS OFFERS THE SIMPLEST SOLUTION ON CREATING TRANSPARENT AND DAYLIGHT SPACES.

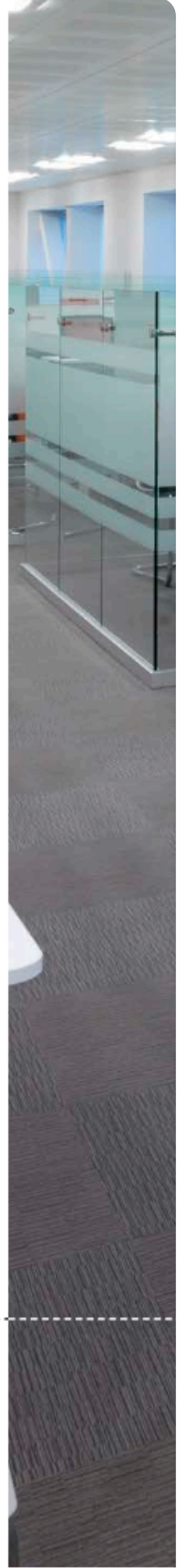
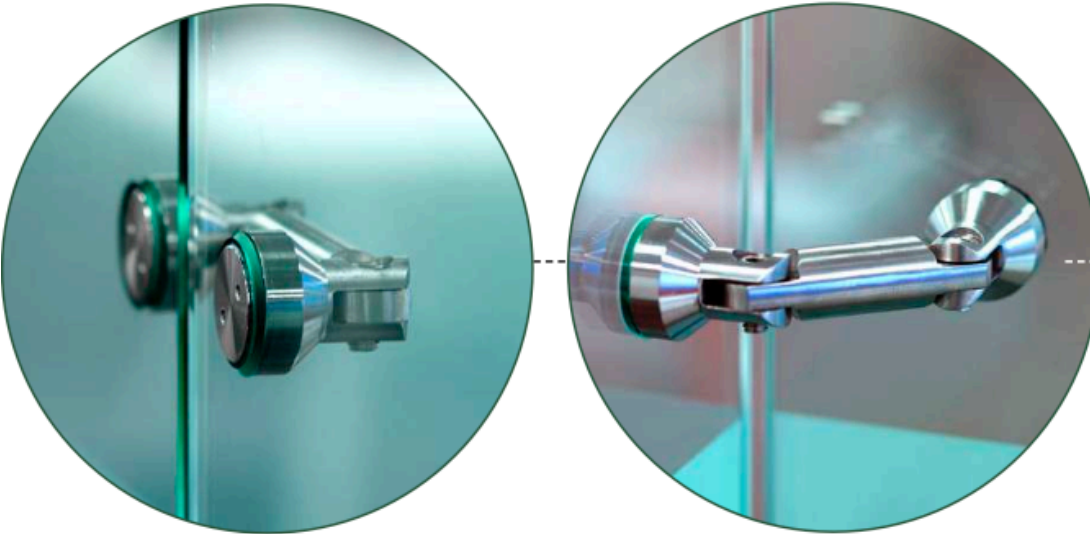


Your Trusted Global Partner in Export Solutions

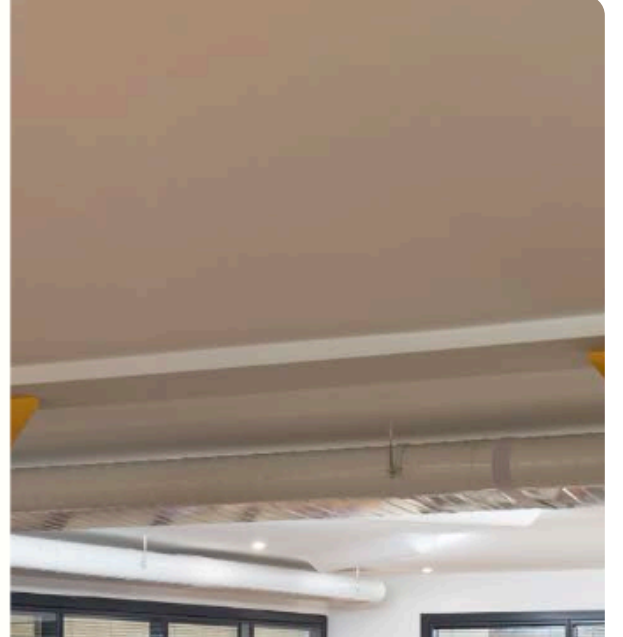


CAM TUTUCULARLA CAM CAMA GEÇİŞ DETAYI

DETAIL OF GLASS TO GLASS TRANSITION WITH GLASS STOP

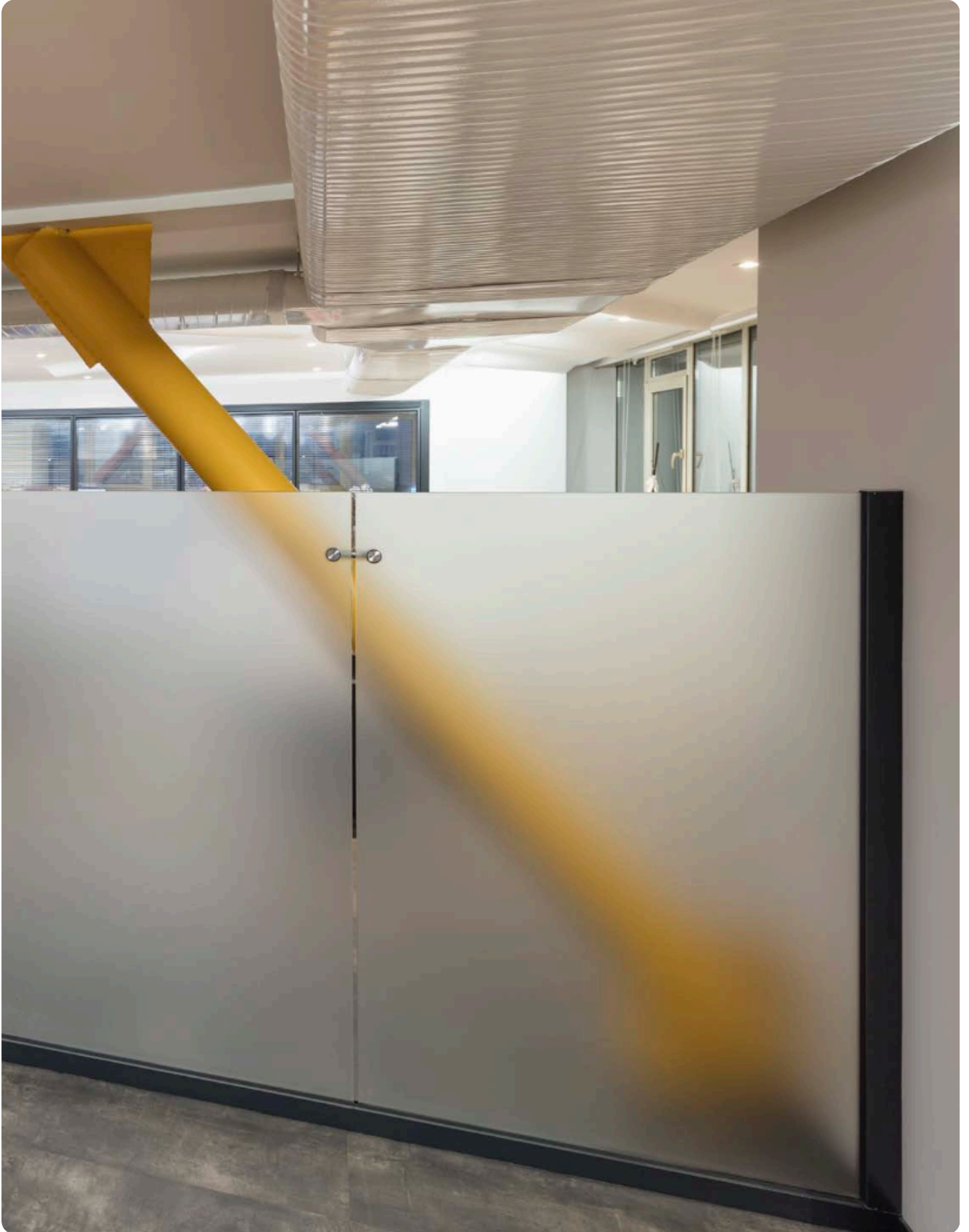






**40 VEYA 55 MM
ZEMİN PROFİLİ
YÜKSEKLİĞİ**

40 OR 55 MM
FLOOR PROFILE
HEIGHT





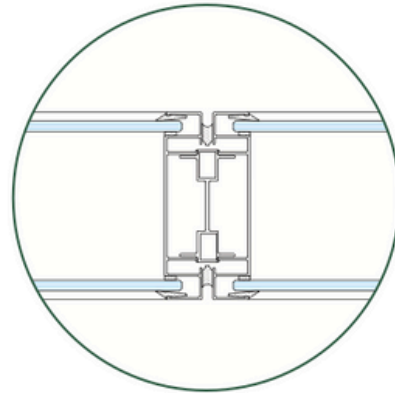
DM-106 LITE

DERZLİ SİSTEM SYSTEM WITH JOINTS



RAYLI KLİPS SİSTEMİ VE ÖZEL TASARLANMIŞ ALÜMİNYUM DİKMELERLE DARBELERE DAYANIKLI HALE GELMEKTE, MONOBLOK ÜRETİM İLE MONTAJ KOLAYLIĞI SAĞLAMAKTA, TEMİZ VE KUSURSUZ DETAYLAR OLUŞTURMAKTADIR.

WITH THE CLIP-IN RAILS AND SPECIALLY DESIGNED ALUMINIUM UPRIGHTS, DM-106 LITE IS RESISTANT TO IMPACTS. THANKS TO THE MONOBLOCK PRODUCTION, IT IS EASY TO INSTALL WITH ITS CLEAN AND PRECISE DETAILS.



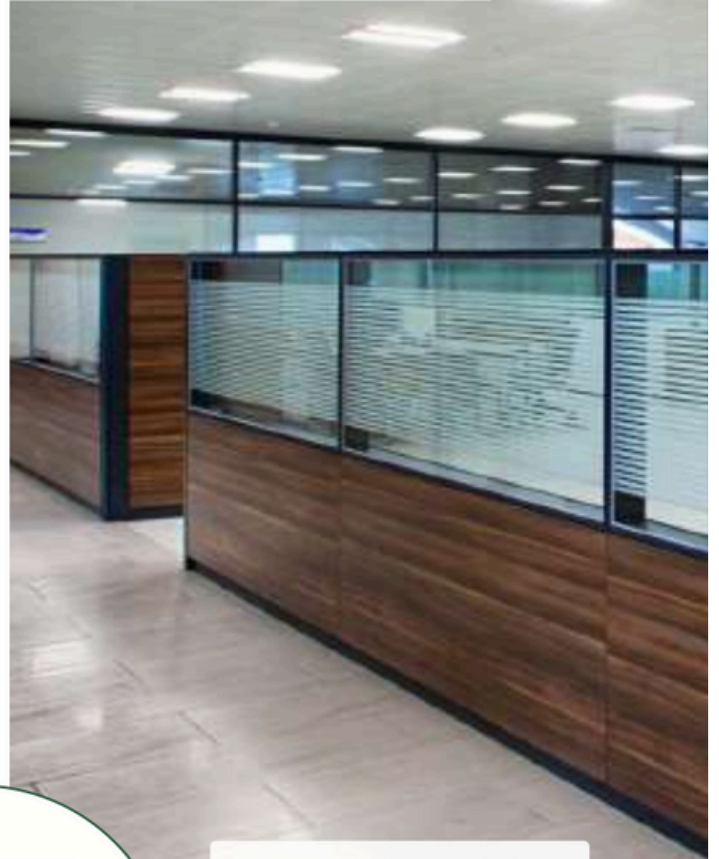


GÜÇLÜ VE STABİL YAPI

STRONG AND STABLE STRUCTURE

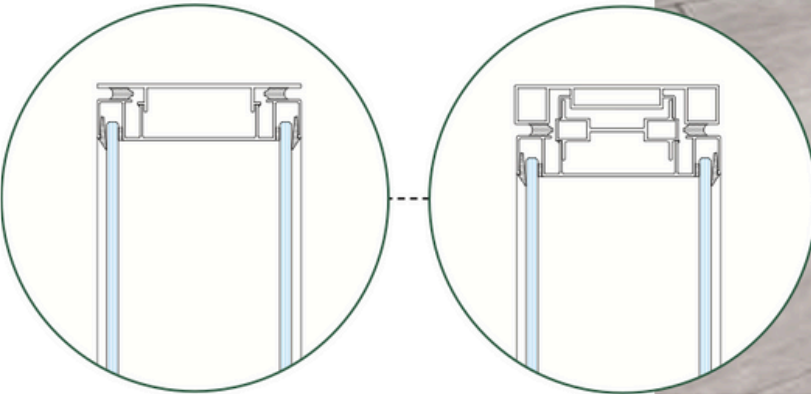
DM-106 LITE SEPERATÖR SİSTEMİNDE, TAM BOY KULLANILAN KLİPS RAYLARI, ÇELİK DİKME PROFİLİNE KLİPSLENMEKTEDİR. CAM MONOBLOKLAR İSE ALÜMİNYUM DİKME PROFİLİ İLE KİLİTLENMEKTE, BÖYLECE TEK NOKTADAN SABİTLENEN SİSTEMLERE GÖRE ÇOK DAHA GÜÇLÜ BİR YAPI ELDE EDİLMEKTEDİR. AYRICA FARKLI KÖR BİTİŞ SEÇENEKLERİ İLE İSTENİLEN TASARIM SAĞLANABİLİR.

IN DM-106 LITE, FULL LENGTH CLIP-IN RAILS ARE CLIPPED TO THE STEEL UPRIGHTS. WHILE GLASS MONOBLOCK ARE LOCKED WITH ALUMINIUM UPRIGHTS, THUS PROVIDING A MUCH STRONGER STRUCTURE THAN THE SYSTEMS FIXED FROM A SINGLE POINT. IN ADDITION, THE DESIGN CAN BE PROVIDED WITH DIFFERENT BLIND FINISH OPTIONS.



FARKLI KÖR BİTİŞ SEÇENEKLERİ

DIFFERENT END PROFILE OPTIONS





MODÜLLER VE CAM KALINLIĞI

MODULES AND GLASS THICKNESS

CAM KALINLIĞI 4 MM, 5 MM VEYA İHTİYACA
GÖRE 6 MM OLARAK UYGULANABİLMEKTEDİR.

GLASS THICKNESSES OF 4 MM, 5 MM OR 6 MM
CAN BE USED ACCORDING TO THE NEED.



Mallmartturk

Your Trusted Global Partner in Export Solutions





Your Trusted Global Partner in Export Solutions







SEPERA

Seperator Sistemleri
Seperator Systems

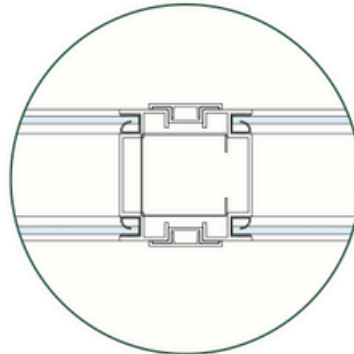
OM-70 LITE OM-100 LITE

OMEGALI SİSTEMLER SYSTEMS WITH OMEGA



MONOBLOK CAMLI ÜNİTELER, MİLİMETRİK DÜZGÜNLÜKTE, TEMİZ VE MONTAJA HAZIR OLARAK ÜRETİLİR. UYGULAMA MEKANINDA CAM KESİM, İÇ TEMİZLİK VE JALUZİ MONTAJI GİBİ İŞLEMLERİ ORTADAN KALDIRIR, ZAMANDAN TASARRUF SAĞLAR.

MONOBLOCK GLASS MODULES ARE PRODUCED IN FACTORY THEREFORE ELIMINATING THE PRODUCTION ON SITE SUCH AS GLASS CUTTING, CLEANING VENETIAN BLIND INSTALLATION, CONTRIBUTING TO FAST INSTALLATION.



Your Trusted Global Partner in Export Solutions



TÜM KONSTRÜKSİYON, MODÜL VE PANELLERİ FABRİKADA ÜRETİLMİŞ OLUP EN KISA VE EN TEMİZ ŞEKİLDE MONTE EDİLEN, DEĞİŞEN MEKAN TASARIMLARINA OLANAK TANIYAN, HIZLI ŞEKİL VEREBİLEN MODÜLER SEPERATÖR SİSTEMDİR.

ALL MODULES, AND PANELS ARE PRODUCED IN THE FACTORY AND THE MODULAR SEPERATOR SYSTEM CAN BE INSTALLED IN A SHORT AMOUNT OF TIME, ALLOWING FOR EASY CHANGES IN INTERIOR DESIGN.

